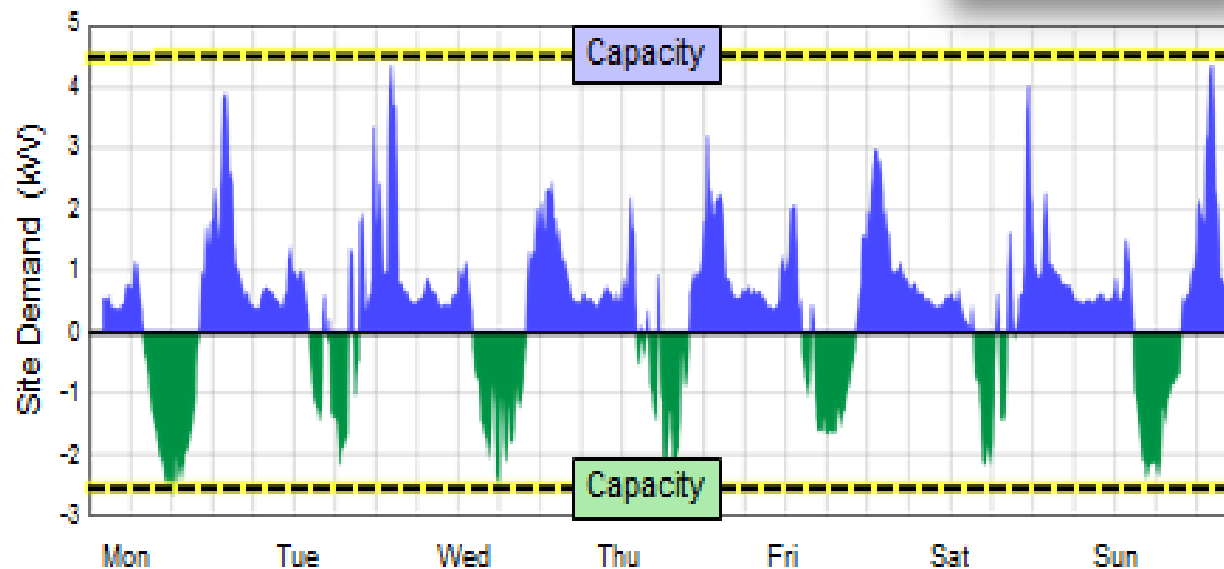


# Myth Busters...

## Family Feud Style

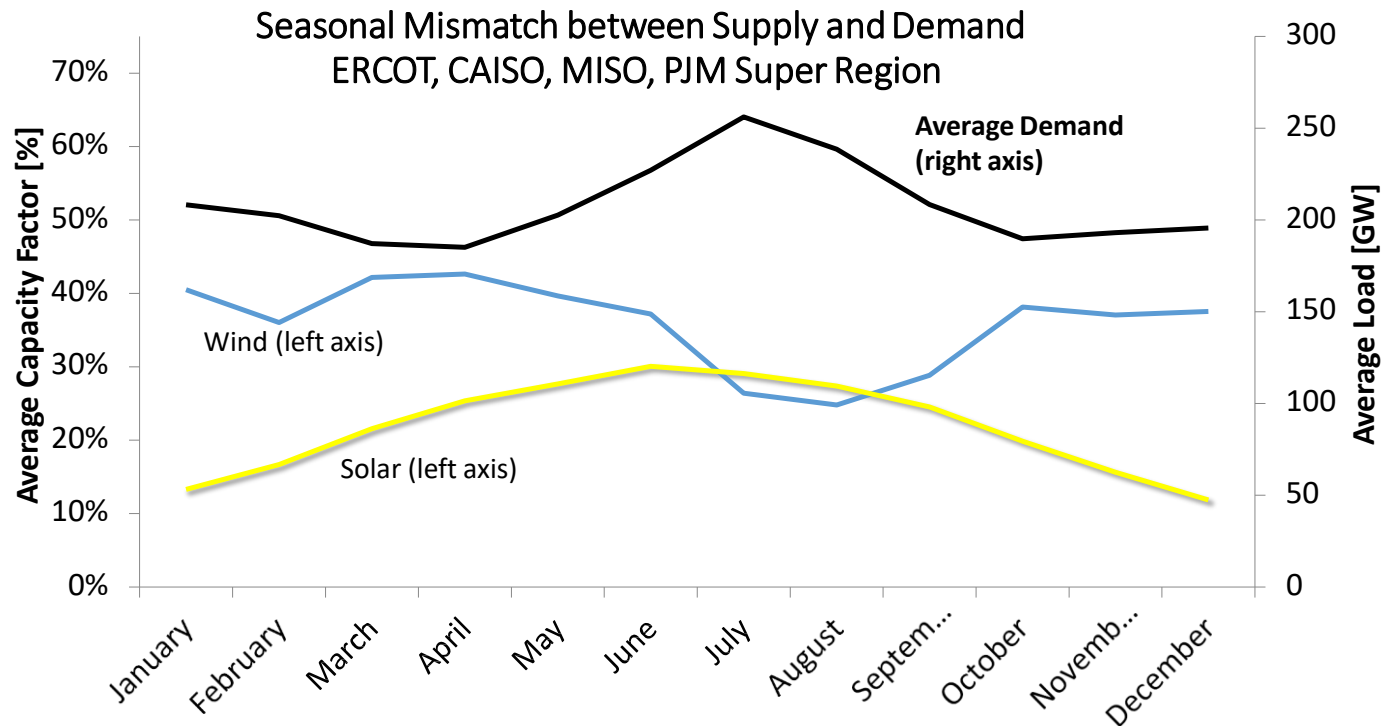
## Zero Energy Home but Not Zero Capacity Home



*Customer Sited Generation Will Impact Local and  
System Level T&D Infrastructure Planning*

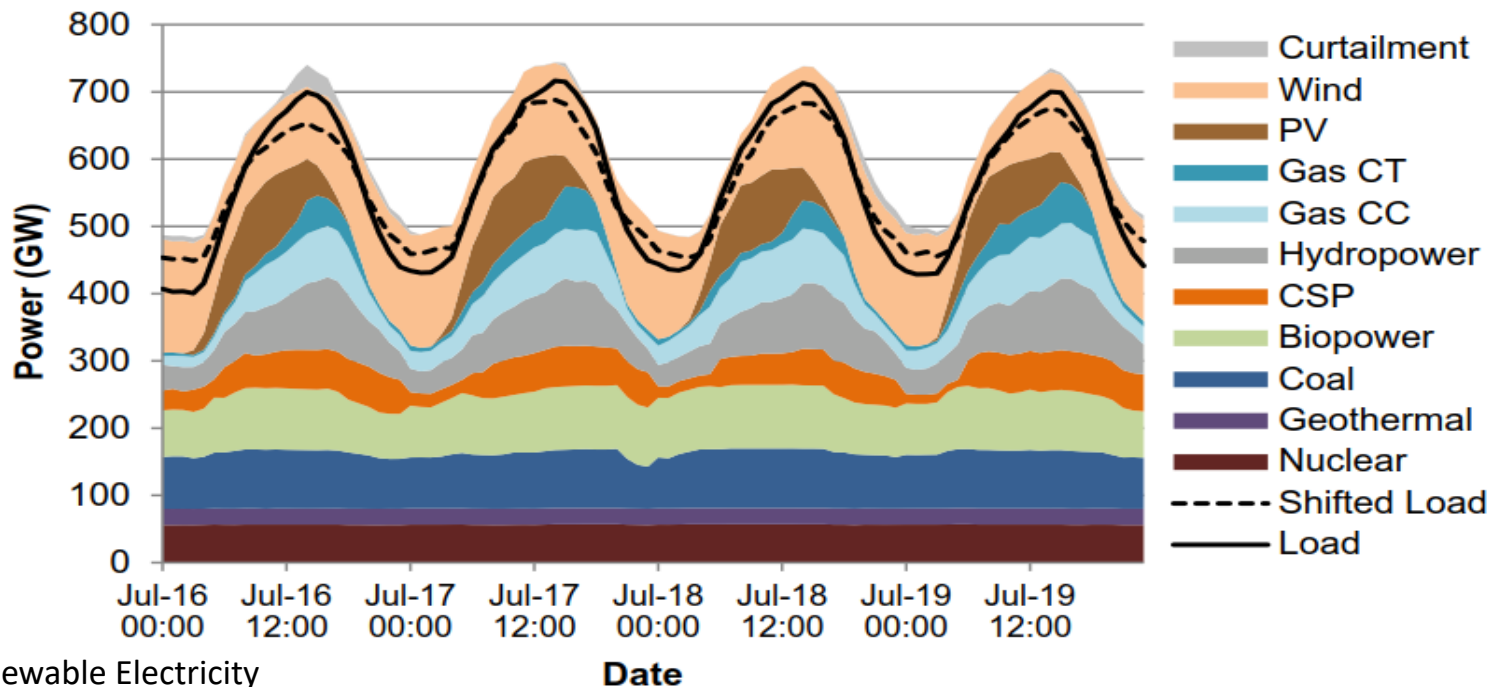
EPRI | ELECTRIC POWER  
RESEARCH INSTITUTE

# Wind and sun correlate poorly with demand, on an hourly, daily or annual basis. (Jared Moore of Meridian Energy)



# Serving Peak Load with 75% Renewables

(annual renewable production = 75% of total energy, not in every hour)



NREL Renewable Electricity  
Futures Study Table ES-6

(a) Summer peak load in 2050

