

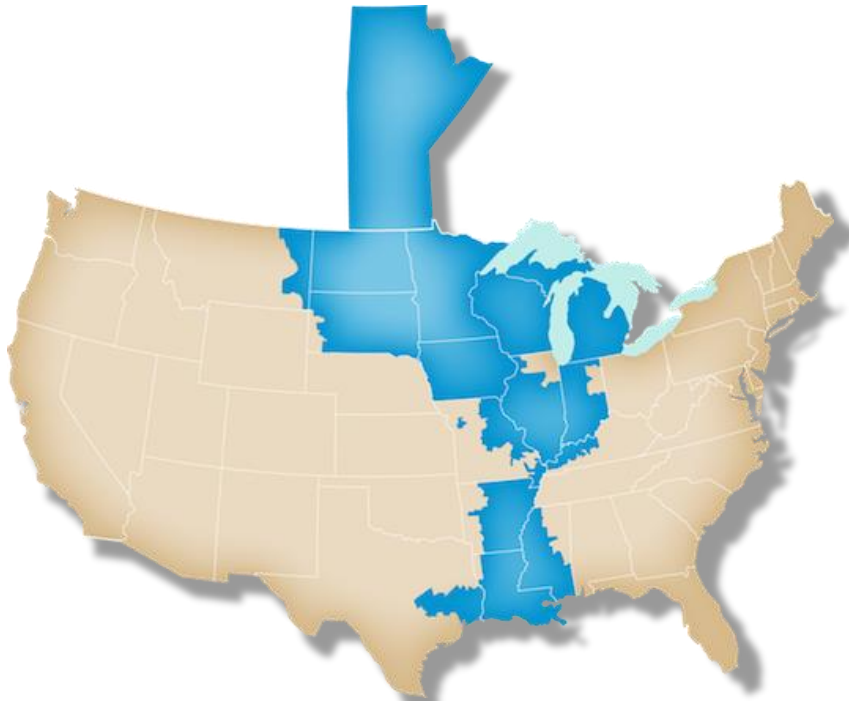


State Perspectives from the MISO Region

Marcus Hawkins
Executive Director



MISO footprint has 17 major retail jurisdictions



- OMS - Regional State Committee that represents the collective interests of the Commissions at MISO & FERC
- Characteristics of MISO footprint relevant to comprehensive planning
 - Primarily vertically integrated
 - Regional, scenario-based transmission planning
 - Everyone wants more certainty
 - Varying appetites for projections
 - Wide range of energy policies and programs

Three current focus areas for OMS

How states work together



Long-Range Transmission Planning

Input on assumptions for future scenarios
Provide resource plans and check siting
Advise on appropriate cost allocation



Resource Adequacy

Share footprint-wide resource projections
Push MISO to maintain reliability
Align retail DR with wholesale requirements

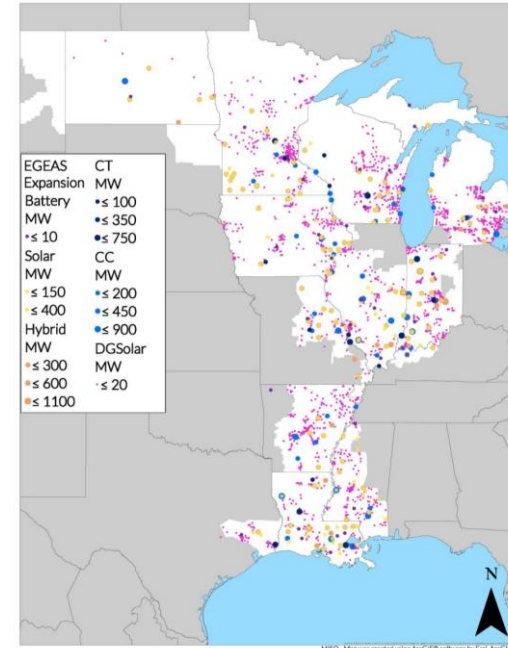
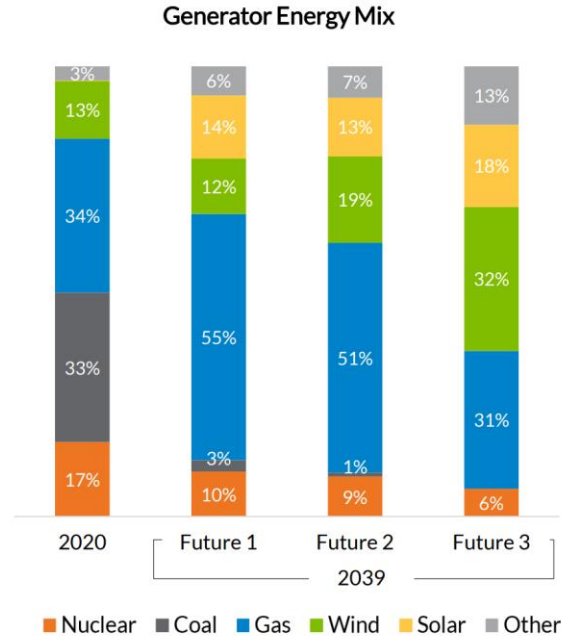


DER

Review of state programs and processes
Sharing experiences amongst states
Active role in O2222 stakeholder process

State involvement in transmission planning

- States provided input on the “Futures” development
 - Submit resource plans, policies, goals, etc.
- Review of generator siting
- Discussion of business case/benefit assessment
- Major role in cost allocation



Resource Planning: States aiming at unknown target

- Majority of states recognize current resource adequacy construct is not sufficient
- Resource requirements at MISO are currently in flux, impacting state resource planning
 - Seasonal requirements
 - Accreditation modifications will impact individual units differently
 - Impact on fleet unknown
- States are focused on reliability
 - Ensure sufficient generation that performs as expected

Data needs: Past performance of resources, correlation of outages

Data wants: Capacity value years into future



Other Areas of Collaboration

- **OMS-MISO RA Survey**
- **Regional Resource Assessment**

FERC Order 2222 and RERRAs: Areas of Interaction

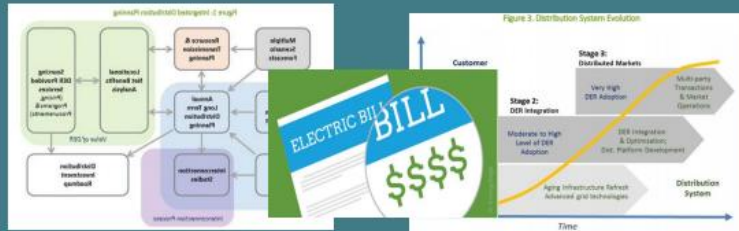
RTO/ISO Tariff Development and Business Practices Manual (BPM) Input



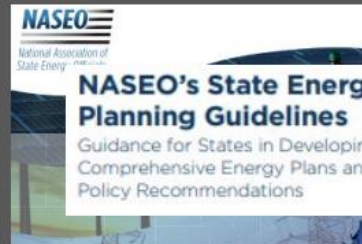
FERC Outlined RERRA Actions

DER Interconnection; Local Distribution Rules for Reliability and Safety; Data Sharing; Metering and Telemetry Req'ts; Oversight of the Distribution Utility; 60-day DERA Review; Dispute Resolution; Multi-use Applications

RERRA Enabling Actions



State/Regional Actions



BLUEPRINT FOR STATE ACTION

NARUC-NASEO TASK FORCE ON COMPREHENSIVE ELECTRICITY PLANNING

History of states working with MISO on DER



Reference Information

- [DER Overview and Work Plan](#)
- [Joint DER Priorities with MISO](#)
- [OMS DER Survey Results](#)
- [Protest of Voltus Complaint](#)