



JW MARRIOTT

INDIANAPOLIS

**Emergency Response Procedures
A Summary for Event Planners**

Medical Emergency

The primary response to a medical emergency should always be to dial 911. If dialed from a hotel phone, then our hotel will know where to direct emergency services when they arrive. If dialed from a cell phone, please alert hotel staff nearby or call 317-860-5800 to report the location where emergency services should be directed.

Fire Alarm

Please stay calm if you are in the hotel and hear the fire alarm sound. Select hotel staff members will immediately investigate the cause of the alarm, and emergency services are automatically notified. If you feel more comfortable choosing to evacuate the hotel, please do so. If you detect any signs of an active fire or threat, evacuate the hotel immediately.

After the fire alarm has been silenced, you may still have strobe lights flashing. These strobe lights will continue to flash until the system can be reset (the issue that caused the alarm will not set it off again). Finally after the system is reset, an announcement will come on over the Public Address System (PA System) informing everyone the hotel is safe or if an evacuation is required.

Hotel Evacuation

In the event there is a hotel evacuation an announcement will come on over the Public Address System (PA System) informing everyone to evacuate the hotel in a safe and calm manor. Selected hotel staff members will be positioned outside the emergency exit doors and walking throughout the hotel to ensure all guests have cleared the hotel.

Your location in the hotel will depend on which emergency exits you take. For example, all guest room floors exits will take you to the emergency exits on the north side of the hotel which are highlighted in blue. The meeting point for guests exiting on the north side of the hotel will be across Washington Street on the lawn of the Eitlejorg Museum. DO NOT TAKE THE ELEVATORS.

If you are exiting from the Event Center side of the hotel or south exits, you will exit to the south part of the hotel which are highlighted in green. The meeting point for guests exiting on the south side of the hotel will be across Maryland and West Street at the Indianapolis Convention Center. DO NOT TAKE THE ELEVATORS.

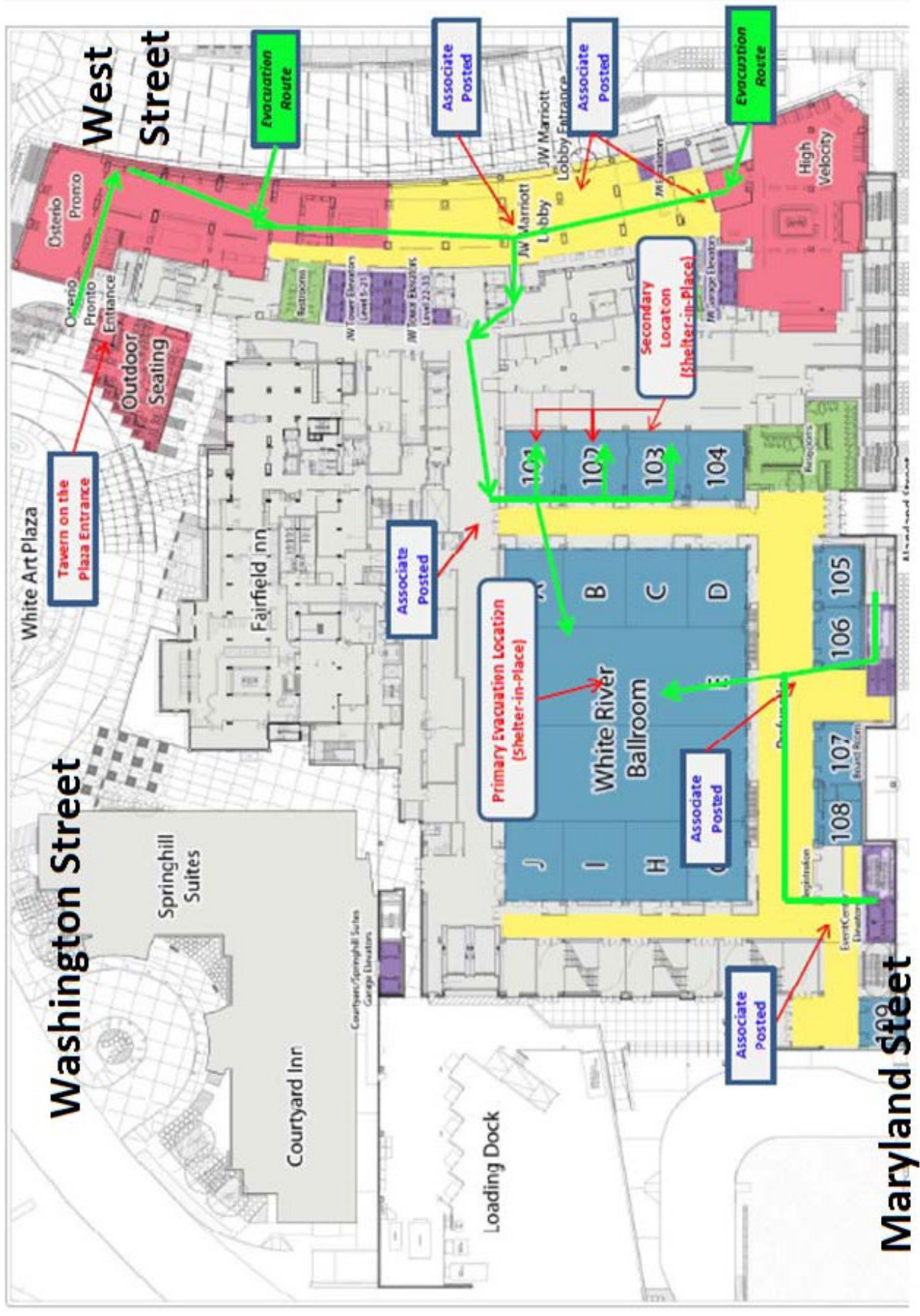
If there is severe weather outside, all meeting areas will be inside the Indianapolis Convention Center.

Tornado Watch/ Tornado Warning/Extreme Weather Events

A Tornado Watch is issued to alert people to the possibility of a tornado developing in your area. At this point, a tornado has not been seen but the conditions are very favorable for tornados to occur at any moment.

A Tornado Warning is issued when a tornado has actually been sighted or has been picked up on radar in your area. This means that you need to take shelter immediately in a safe sturdy structure. In the event a Tornado Watch is issued for the Indianapolis area the hotel designates an area of the hotel as a storm shelter and places a severe weather CD that plays on channel 64 of all in room televisions. The storm

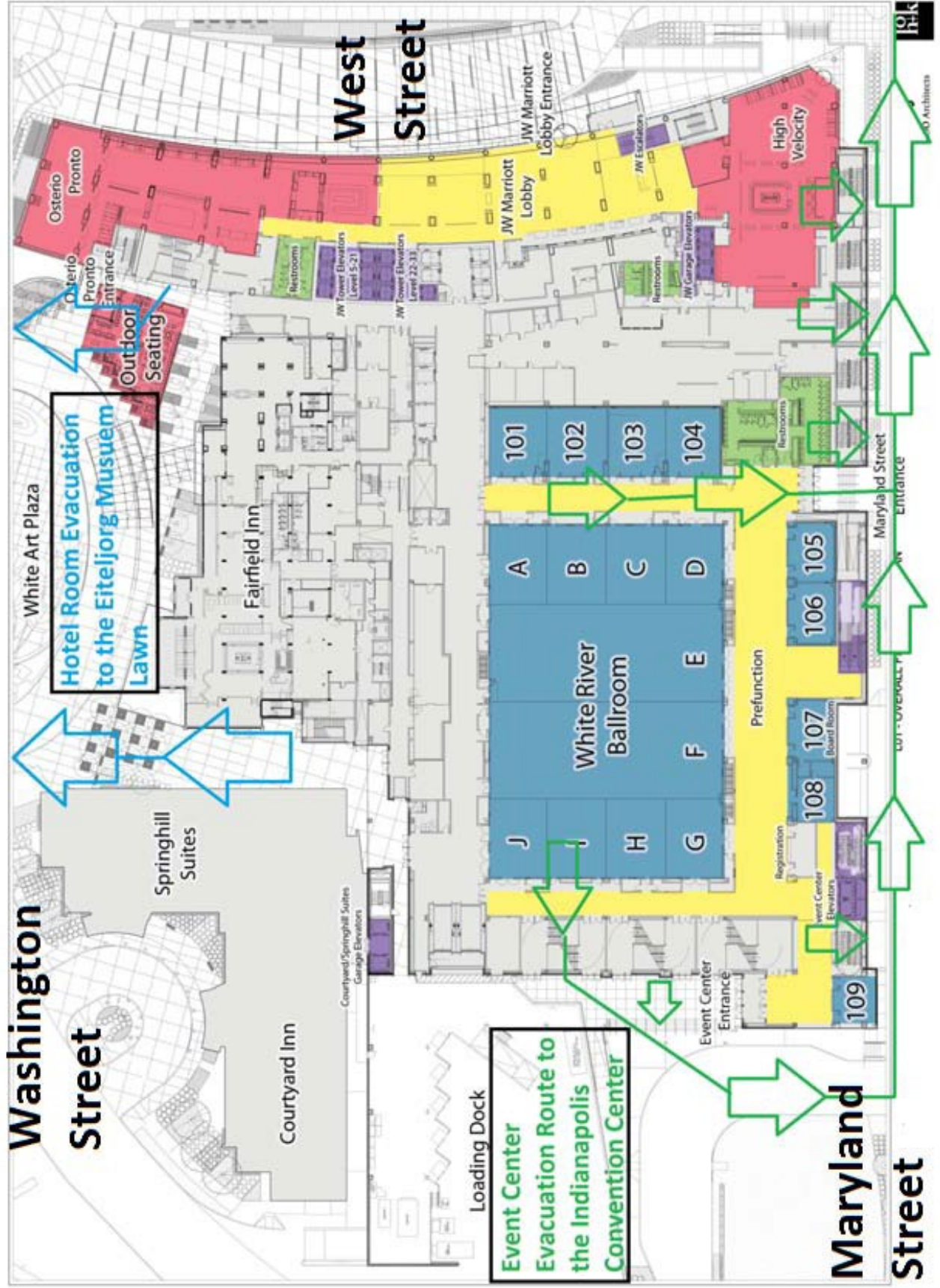
shelter is an area of the hotel we feel would be the safest for all guests to access and less likely for guests to encounter broken glass or other debris. Typically the hotel uses vacant meeting rooms in the White River area. When a storm shelter is in place, guests are more than welcome to stay in the area until the storm passes.



Washington Street

West Street

Maryland Street



Washington Street

West Street

Maryland Street

Hotel Room Evacuation to the Eiteljorg Museum Lawn

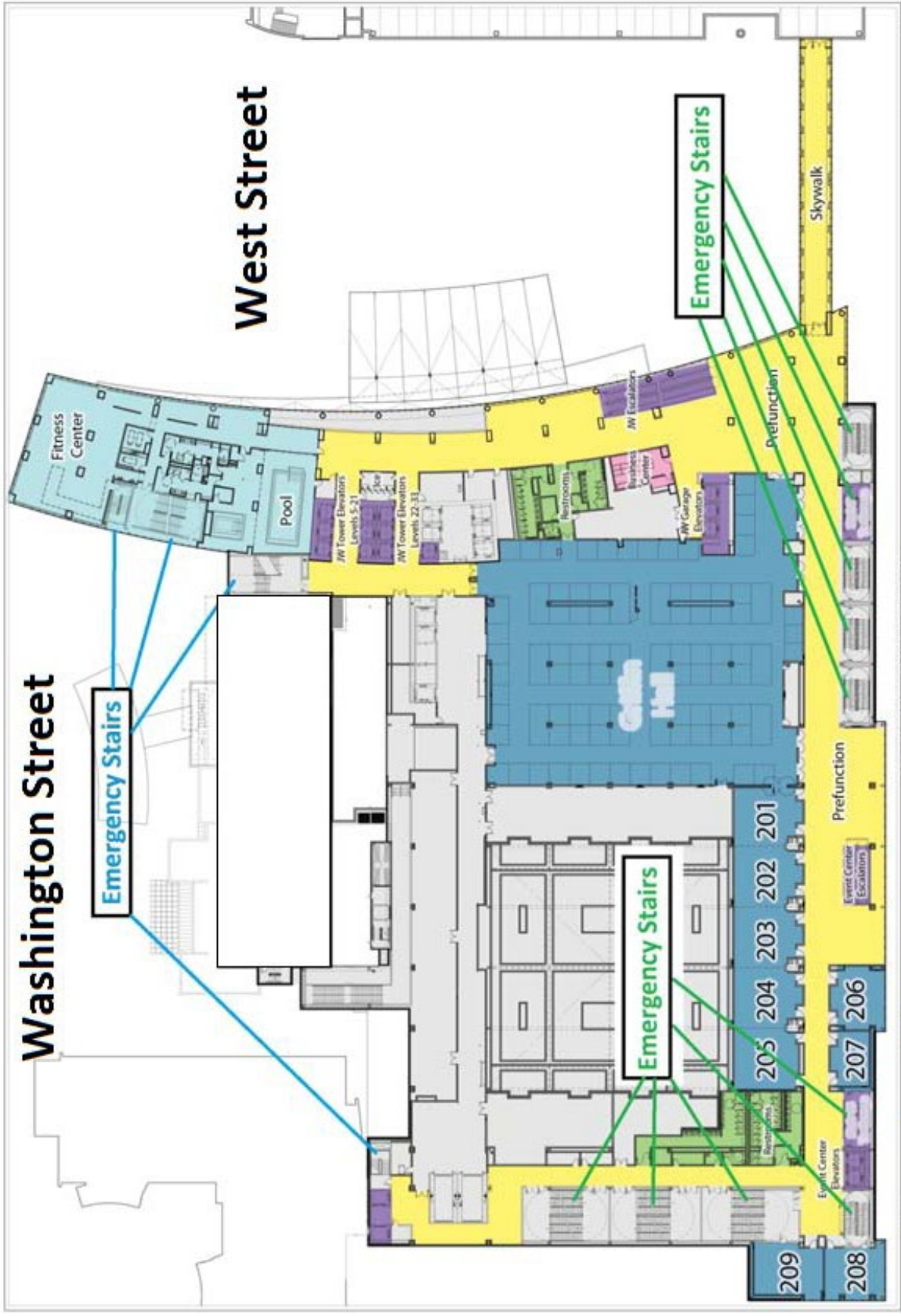
Event Center Evacuation Route to the Indianapolis Convention Center



Washington Street

West Street

Maryland Street



L102 - OVERALL SECOND FLOOR PLAN

Washington Street

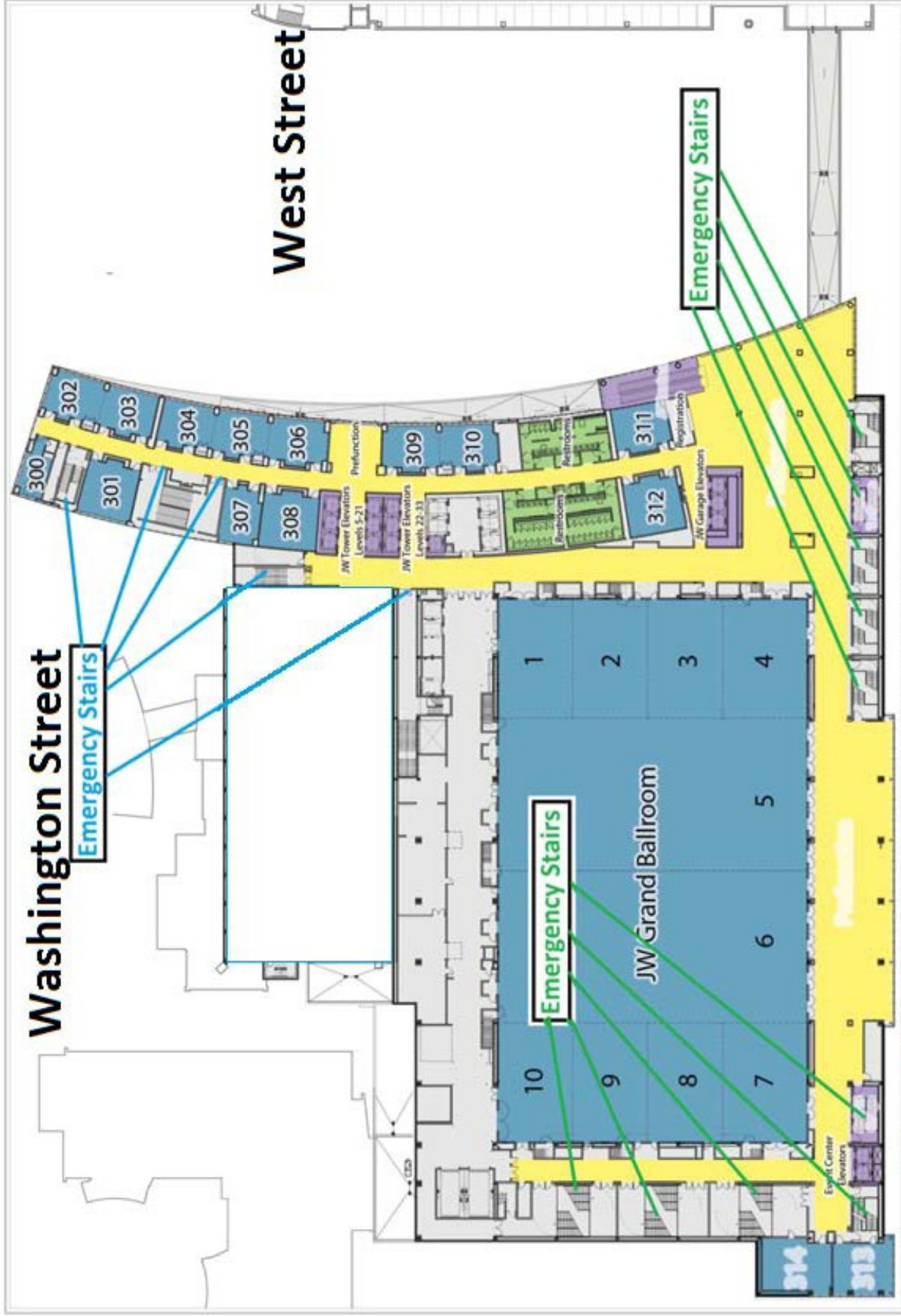
Emergency Stairs

West Street

Emergency Stairs

Emergency Stairs

Maryland Street



L03 - OVERALL THIRD FLOOR PLAN

Hospitals – 24 hour Emergency Care

IU Methodist Hospital

1701 Senate Blvd
Indianapolis, IN 46202
(317) 962-8355

Eskenazi Hospital

720 Eskenazi Ave
Indianapolis, IN 46202
(317) 880-0000

Riley Hospital for Children at Indiana University Health

705 Riley Hospital Dr
Indianapolis, IN 46202
(317) 944-5000

St. Vincent's Hospital

2001 W 86th St
Indianapolis IN 46260
(317) 338-2345

24 Hour Pharmacy

CVS 24 Hour Pharmacy
1545 N Meridian St
Indianapolis, IN 46202
(317) 923-1941