



NARUC

Summer Committee Meetings

Committee On Gas

Gas Crystal Ball



NARUC Gas Crystal Ball Panel

Andy Weissman, Senior Counsel

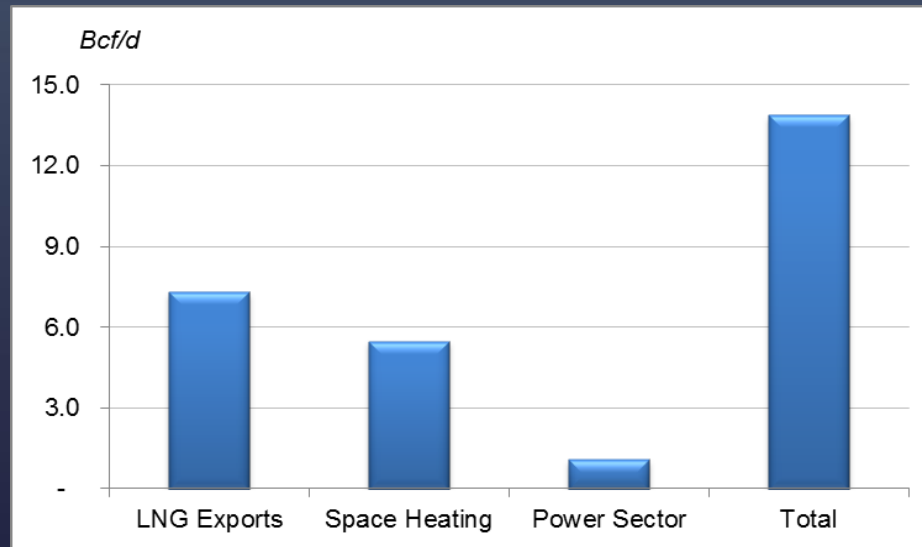
Nashville, TN

July 25, 2016

Emerging Price Volatility Risk

- Unprecedented potential for year-over-year increase in demand

Potential Difference in Demand, Bearish 2019 v. Bullish 2020 Scenario



Source: EBW Analytics



NARUC

Summer Committee Meetings

Committee On Gas

Gas Crystal Ball



THE POWER OF PENNEAST

REPRESENTING A TOTAL LAND AREA OF JUST OVER ONE SQUARE MILE,
WHO SAYS BIG THINGS DON'T COME IN SMALL PACKAGES?

ONE BILLION CUBIC FEET PER DAY

Beneath its roughly one square mile footprint the PennEast Pipeline will deliver one billion cubic feet of natural gas every day. That capacity could fuel over five 1,000 megawatt natural gas combined cycle power plants.

WHY NOT SOLAR?

A SOLAR ARRAY SPANNING **285 SQUARE MILES** WOULD BE REQUIRED TO GENERATE PENNEAST'S POTENTIAL GAS-FIRED ELECTRICITY.

That much land would require covering all of Mercer and some of Hunterdon Counties in New Jersey with solar panels.

HOW ABOUT WIND?

6,074 INDUSTRIAL-SIZE WIND TURBINES WOULD BE NEEDED TO GENERATE PENNEAST'S POTENTIAL GAS-FIRED ELECTRICITY.



Modern natural gas combined cycle power plants are highly efficient, capable of running around the clock.



Natural gas, solar and wind all work together to produce electricity. However, wind and solar don't come close to the reliability provided by clean burning natural gas. Most of the time the sun isn't shining and wind isn't blowing, but natural gas is there to keep our lights on, refrigerators cold, and showers hot.



THE POWER OF PENNEAST

REPRESENTING A TOTAL LAND AREA OF JUST OVER ONE SQUARE MILE,
WHO SAYS BIG THINGS DON'T COME IN SMALL PACKAGES?

ONE BILLION CUBIC FEET PER DAY

Beneath its roughly one square mile footprint the PennEast Pipeline will deliver one billion cubic feet of natural gas every day. That capacity could fuel over five 1,000 megawatt natural gas combined cycle power plants.

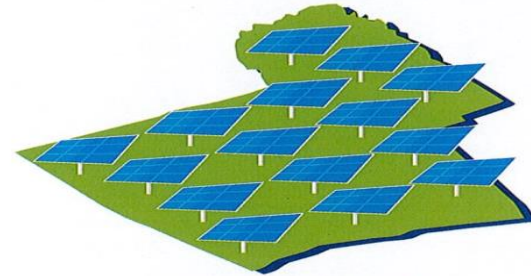


Modern natural gas combined cycle power plants are highly efficient, capable of running around the clock.

WHY NOT SOLAR?

A SOLAR ARRAY SPANNING **285 SQUARE MILES** WOULD BE REQUIRED TO GENERATE PENNEAST'S POTENTIAL GAS-FIRED ELECTRICITY.

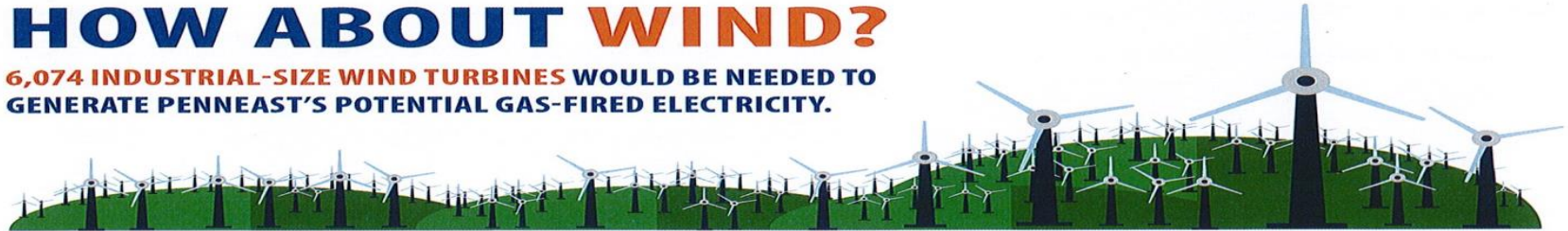
That much land would require covering nearly all of Carbon County, Pennsylvania, with solar panels.



CARBON COUNTY, PA

HOW ABOUT WIND?

6,074 INDUSTRIAL-SIZE WIND TURBINES WOULD BE NEEDED TO GENERATE PENNEAST'S POTENTIAL GAS-FIRED ELECTRICITY.



Natural gas, solar and wind all work together to produce electricity. However, wind and solar don't come close to the reliability provided by clean burning natural gas. Most of the time the sun isn't shining and wind isn't blowing, but natural gas is there to keep our lights on, refrigerators cold, and showers hot.



NARUC

Summer Committee Meetings

Committee On Gas

Gas Crystal Ball