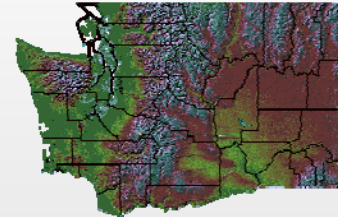


Washington State

Energy Facility Site Evaluation Council

Jim Luce, Chairman
Allen Fiksdal, Manager

EFSEC



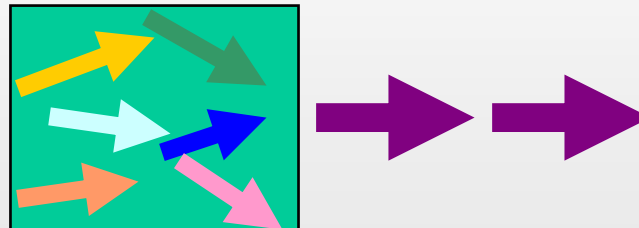


- 1960's – Utilities begin looking at using nuclear power in Washington State.
- 1969 – State advisory committee recommended a council of state agencies be formed in order to properly evaluate proposed sites for nuclear power plants so that *public needs and interests* could be *determined with finality*.
- 1970 – Legislature created the Energy Facility Site Evaluation Council



- **The Council was comprised of representatives of all necessary state agencies and local government.**
- **The Council brought all evaluation into one agency.**
- **After evaluation the Council makes a recommendation to Governor for final decision.**
- **Final decision supersedes all other state and local governments.**

- **“One Stop” Regulatory Authority**
 - EFSEC supercedes all other state and local authorities for siting and regulating major energy facilities
 - EFSEC has been delegated authority by the EPA to issue permits under the federal clean air act (partial delegation) and clean water act





EFSEC required to:

- **Recognize the pressing need for increased energy facilities**
- **Provide abundant energy at a reasonable cost**
- **Balance the increasing demands for energy facilities with the broad interests of the public**

EFSEC

PRESENT MEMBERS

Chair – Governor Appointee



- **Dept. of Ecology**
- **Dept. of Fish & Wildlife**
- **Dept. of Community, Trade & Economic Development**
- **Dept. of Natural Resources**
- **Utilities & Transportation Commission**

- **Local Government
(for application review)**

Optional members

- **Dept. of Agriculture**
- **Dept. of Health**
- **Dept. of Transportation**
- **Military Department**

EFSEC staff are provide by Dept. Community, Trade, & Economic Development

- **Power Plants**

- Non Hydro Thermal Power Plants 350+ MW
- Floating Thermal Power Plants 100+ MW
- Alternative Energy Resources “any size may opt-in”
(wind, solar, geothermal, wave/tidal,
landfill gas, biomass, etc.)



- **Pipelines**

- Natural Gas, LPG or Synthetic Fuel >14 inches and 15+ miles (intrastate only)
- Crude or Refined Oil Products > 6 inches and 15+ miles



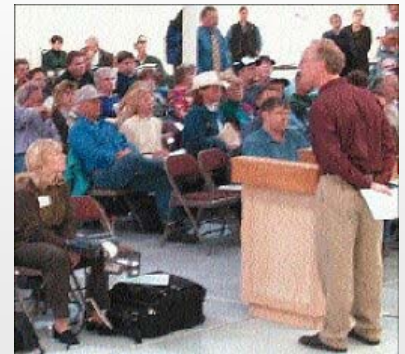
- **Refineries and Storage Facilities**

- **Refineries Processing >25,000 bbl/day**
- **Liquid Natural Gas Storage Facilities Receiving > 1,000,000 cu.ft/day (if transported over marine waters)**
- **Crude or Refined Petroleum or Liquefied Petroleum Facilities Receiving >50,000 bbl/day**
- **Underground Natural Gas Storage Facilities Capable of Delivering > 1,000,000 cu.ft/day**



- **Application Review** (staff discussions with applicant)
- ***Environmental Review** (public input)
- ***Adjudicative Proceeding** (formal proceedings)
- ***Land Use Consistency Determination**
- ***Federal Permits:** Air, Water Discharge, Water Quality

* Include public meetings in local area



- **Recommendation to Governor**
 - **Possible Draft Site Certification Agreement**

Site Certification Agreement Lists the conditions the Council determines are necessary to construct and operate the facility.

- **Governor's Decision**

If the Governor approves the project, both the Governor and project owner sign the Site Certification Agreement (Contract).



- **Kittitas Valley Wind Power Project**
 - Adjudicative hearings held last month
- **Pacific Mountain Energy Center IGCC**
 - Application received last month
 - Beginning discussions with applicant



EFSEC monitors approved projects for compliance with the Site Certification Agreement through contracts with:

State agencies

Ecology

Health

WDFW

Military

State Patrol

Local agencies

Counties

Cities

Local air authorities



- **Site Visits – if problem reported EFSEC staff works with owners to solve problem first.**
- **If negotiations fail and problem continues then issue is brought to Council for action.**
 - Legal order
 - Monetary fine





Washington State Energy Facility Site Evaluation Council - Microsoft Internet Explorer

File Edit View Favorites Tools Help

Back Forward Stop Home Search Favorites

Address <http://www.efsec.wa.gov/> Go

ENERGY FACILITY SITE EVALUATION COUNCIL

- About EFSEC
- Certification Process
- Energy Facilities
- Laws & Rules
- Rulemaking
- Council Meetings
- Staff Contacts
- What's New
- Site Map
- Links
- EFSEC Home

The Washington State Energy Facility Site Evaluation Council (EFSEC or Council) provides a "one-stop" siting process for major energy facilities in the State of Washington. The Council coordinates all of the evaluation and licensing steps for siting major energy facilities in Washington. If a project is approved, EFSEC specifies the conditions of construction and operation; issues permits in lieu of any other individual state or local agency authority; and manages an environmental and safety oversight program of facility and site operations.

Energy Facility Site Evaluation Council
(360) 956-2121
(360) 956-2158 Fax

925 Plum Street SE
Building 4
PO Box 43172
Olympia WA 98504-
efsec@ep.cted.wa.gov
More [Staff Contacts](#)

Under Review:

- ▶ [Kittitas Valley Wind](#)
- ▶ [Wild Horse Wind](#)
- ▶ [Starbuck*](#)

* Review Suspended

Permitted:

- ▶ [BP Cherry Point](#)
- ▶ [Chehalis Generation](#)
- ▶ [Satsop CT](#)
- ▶ [Sumas 2](#)
- ▶ [Walla Walla Power](#)
- ▶ [Nuclear](#)
- ▶ [Other](#)

CO₂ Mitigation Law:

- ▶ [Chapter 80.70 RCW](#)

New to the site:

- ▶ [CR 101](#) filed for review of air rules 463-78 WAC

Internet