

Appendix 5

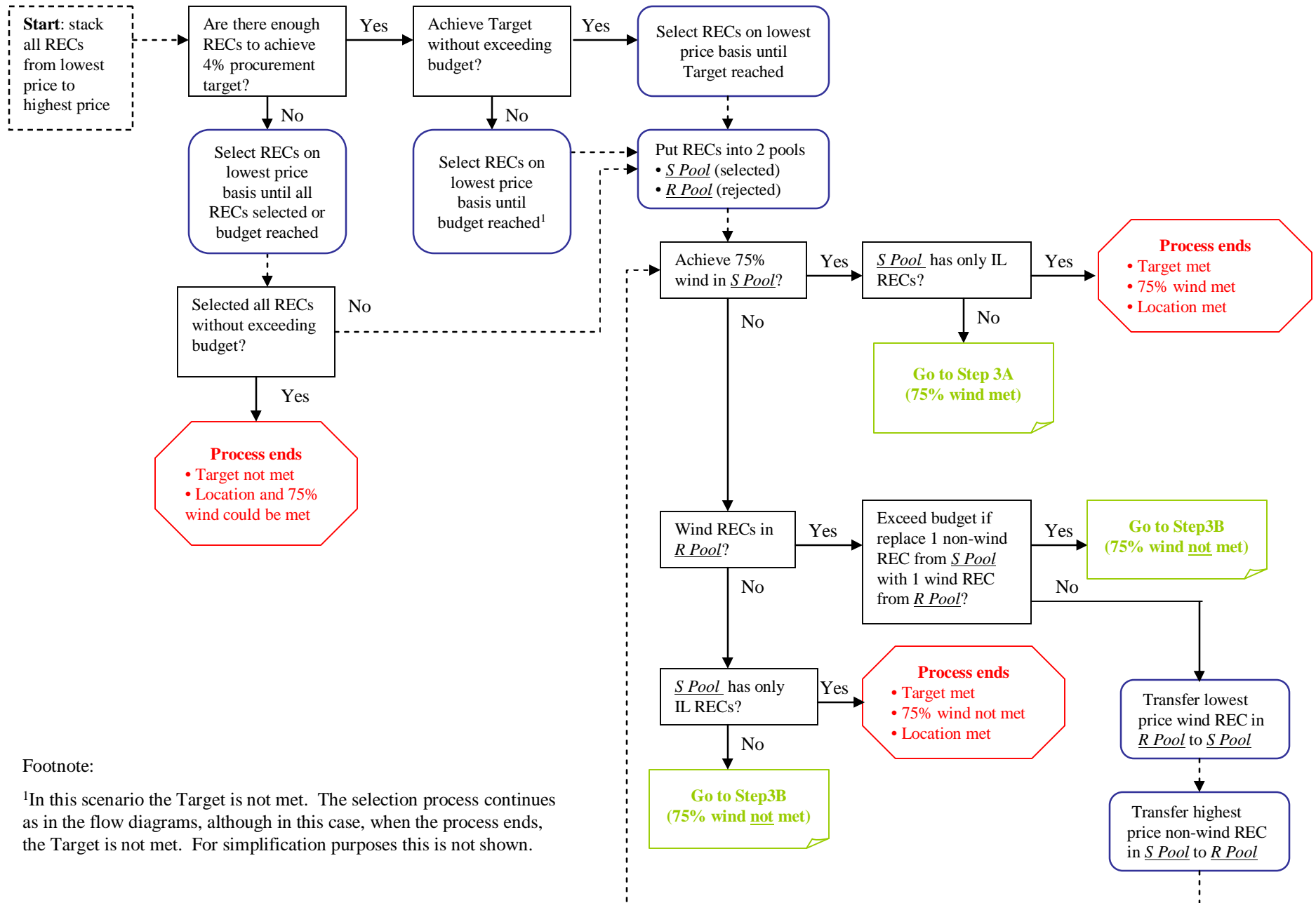
Priority in REC Selection

Step 1: Application of Benchmarks

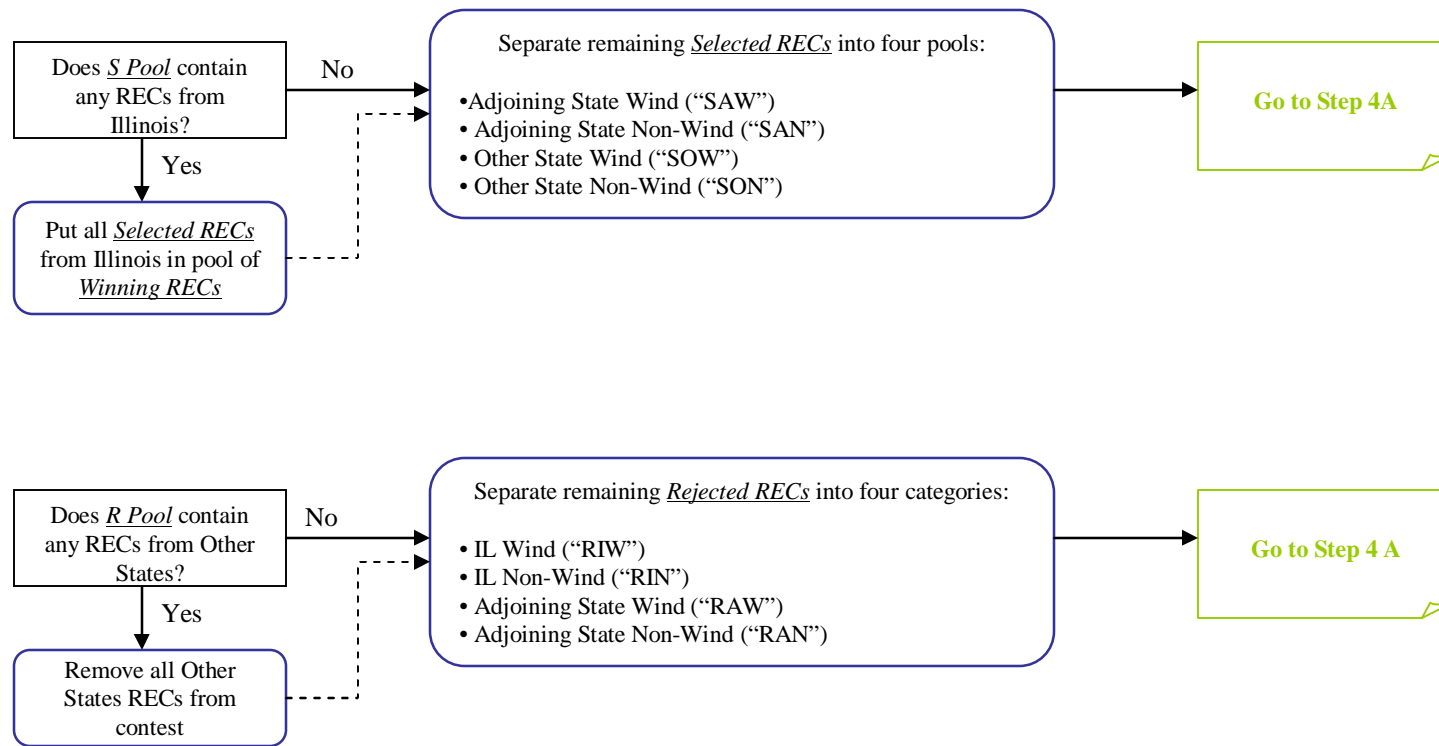
Benchmarks for RECs will be established by the Procurement Administrator, in consultation with the Illinois Power Agency, the Procurement Monitor, and the Illinois Commerce Commission (“ICC”) Staff. The benchmarks are confidential and are subject to review and approval by the ICC.

Bids that fail to meet the benchmarks are eliminated from consideration and are not evaluated.

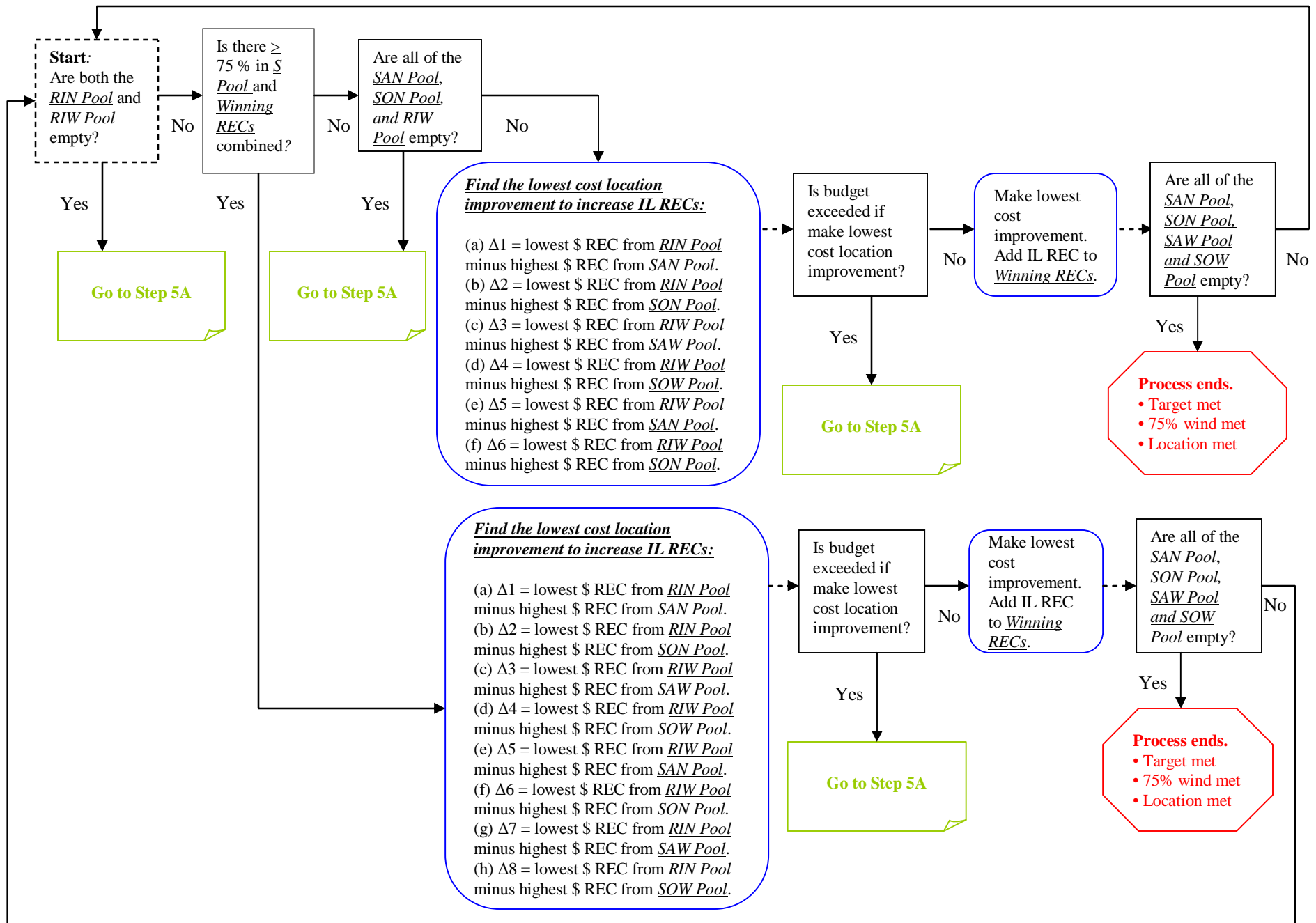
Step 2: Target and Wind



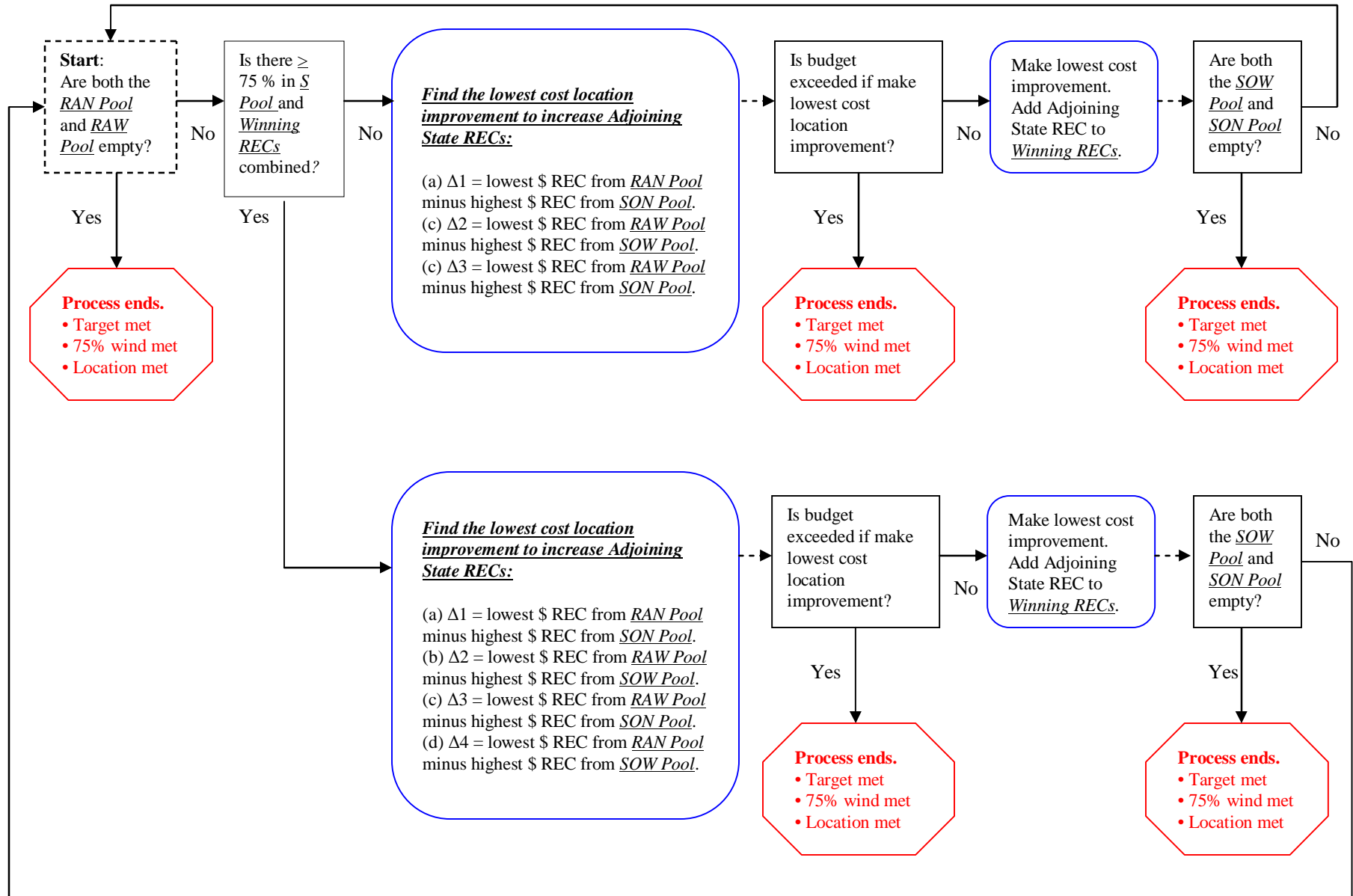
Step 3A: Pools for Location Adjustment



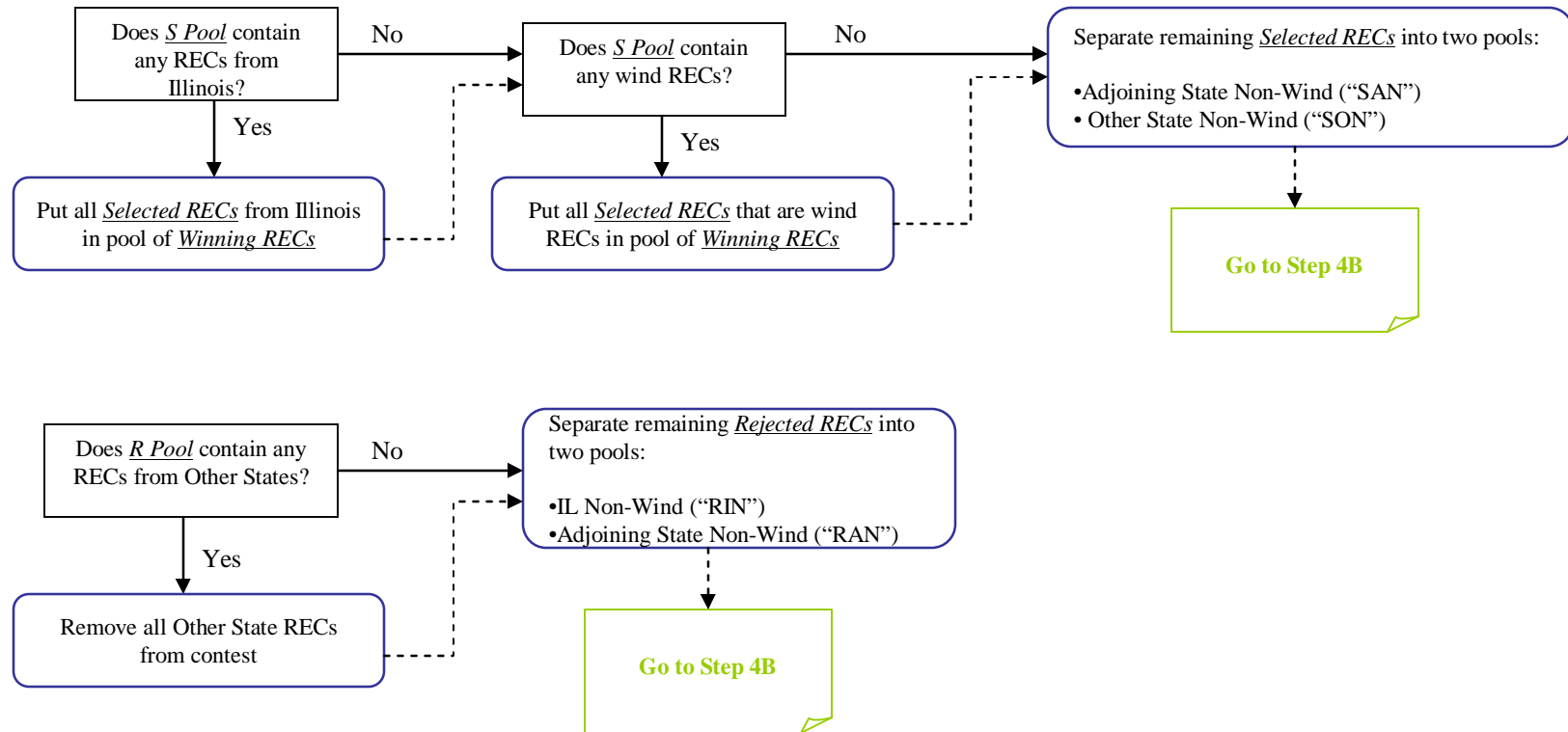
Step 4A: Illinois Adjustment



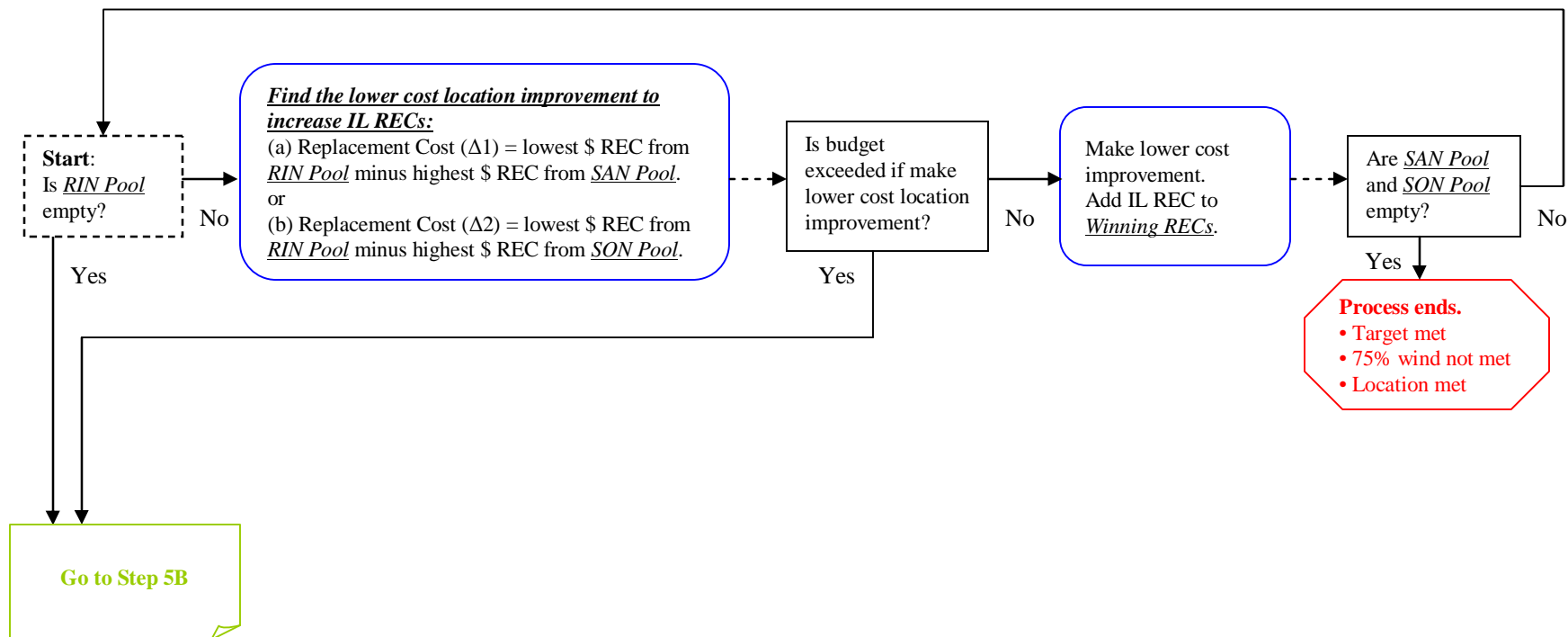
Step 5A: Adjoining State Adjustment



Step 3B: Pools for Location Adjustment (Insufficient Bids to achieve 75% wind)



Step 4B: Illinois Adjustment (Insufficient Bids to achieve 75% wind)



Step 5B: Adjoining State Adjustment (Insufficient Bids to achieve 75% wind)

