



USAID
FROM THE AMERICAN PEOPLE



National
Association of
Regulatory
Utility
Commissioners

Ohio

**Power Siting
Board**



USAID
FROM THE AMERICAN PEOPLE



National
Association of
Regulatory
Utility
Commissioners

Ohio Power Siting Board Mission Statement

To support sound energy policies that provide for the installation of energy capacity and transmission infrastructure for the benefit of Ohio citizens, promoting the state's economic interests, and protecting the environment and land use.

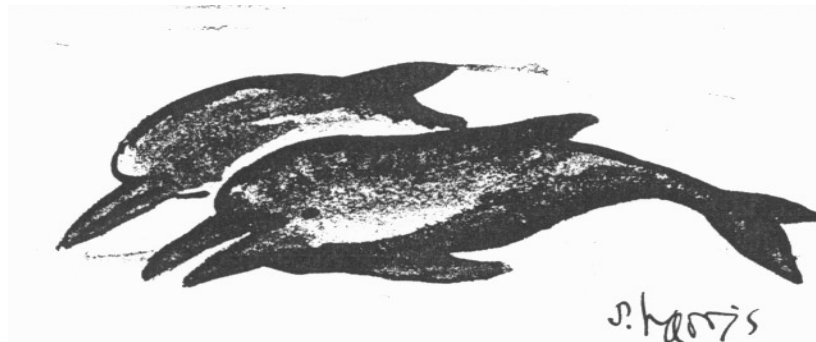


USAID
FROM THE AMERICAN PEOPLE



National
Association of
Regulatory
Utility
Commissioners

“Although humans make sounds with their mouths and occasionally look at each other, there is no solid evidence that they actually communicate among themselves.”





USAID
FROM THE AMERICAN PEOPLE



National
Association of
Regulatory
Utility
Commissioners

Board Members





USAID
FROM THE AMERICAN PEOPLE



National
Association of
Regulatory
Utility
Commissioners

Balancing of interests is successfully achieved through active participation of the member agencies that comprise the Board





USAID
FROM THE AMERICAN PEOPLE



National
Association of
Regulatory
Utility
Commissioners

What is the Board's role?

- Before any company can build a major utility facility, OPSB assures that it benefits Ohio's citizens, promotes the state's economic interests, and protects the environment and land use
- Issues certificates of environmental compatibility and public need for the construction, operation, and maintenance of each facility
- Board certificate supersedes local jurisdiction
- Monitors construction and first two years of operation



USAID
FROM THE AMERICAN PEOPLE



National
Association of
Regulatory
Utility
Commissioners

High-Level Summary

- One-stop siting process
- Timely action: approximately 6-12 months for applications with statutory time mandates; even more expedited schedules are an option
- Regulatory certainty: process is known and well practiced
- Sole jurisdiction: public and local government participation is encouraged, but decision making authority rests with the OPSB
- Model legislation: the OPSB process has been duplicated by many other states



USAID
FROM THE AMERICAN PEOPLE



National
Association of
Regulatory
Utility
Commissioners

Board Jurisdiction

Generation Facilities

- 50 Megawatts and greater
 - Over 1,300 MW of natural gas generation approved in 2013 Q2
- Wind Facilities five MW and greater
 - 1,300 MW of wind power certified in Ohio



USAID
FROM THE AMERICAN PEOPLE



National
Association of
Regulatory
Utility
Commissioners

Board Jurisdiction

Electric Transmission

- 125kV and greater
 - Certain projects may be eligible for accelerated process*
- Letter of Notification (90 days)
- Expedited Letter of Notification (28 days)
- Construction Notice (42 days)
- Expedited Construction Notice (21 days)

*Eligibility determined by voltage size, length, customer usage, and need.



USAID
FROM THE AMERICAN PEOPLE



National
Association of
Regulatory
Utility
Commissioners

Board Jurisdiction

Natural Gas Transmission – More than 500 feet long and nine inches in outside diameter and capable of transporting gas at pressures in excess of 125 psi (w/ exceptions)

Project Type	Siting	Safety
Intrastate gas pipeline	OPSB	PUCO
Interstate gas pipeline	FERC	PHMSA (PUCO acts as “agent” in Ohio)
Production facilities	ODNR	ODNR
Gathering lines	Local Zoning	PUCO
Liquids lines	Local Zoning	PHMSA
Compressor stations	Certified local building departments	Certified local building departments

Application requirement matrix for electric power transmission lines

Description of the Proposed Electric Power Trans-mission Line and Associ-ated Facilities	Certificate Application (BTX, BTA, or BSB) Required	Letter of Notification Application (BLN) Required	Construction Notice Appli-cation (BNR) Required
	4906-15-01 through 4906-15-07	4906-11-01	4906-11-02
(1) Rerouting or extension or new con-struction of single or multiple cir-cuit electric power trans-mission line(s) as follows:			
(a) Line(s) three hundred kilovolts (kV) and above, and not greater than 0.1 mile in length.			X
(b) Line(s) three hundred kV and above, and greater than 0.1 mile but not greater than one mile in length.		X	
(c) Line(s) three hundred kV and above, and greater than one mile in length.	X		
(d) Line(s) one hundred twenty-five kV and above, but less than three hundred kV, and not greater than 0.2 miles in length.			X
(e) Line(s) one hundred twenty-five kV and above, but less than three hundred kV, and greater than 0.2 miles in length but not greater than two miles in length.		X	
(f) Line(s) one hundred twenty-five kV and above, but less than three hundred kV, and greater than two miles in length.	X		
(2) Adding additional circuits on existing structures designed for multiple cir-cuit use.			
(a) No new permanent access roads or structure replace-ment, and no wid-en-ed right-of-way required.			X
(b) New per-manent access roads or structure replacement or widened right-of-way required.		X	
(3) Replacing conductors on existing structures with larger or bundled con-ductors.			X

Application requirement matrix for electric power transmission lines

Description of the Proposed Electric Power Trans-mission Line and Associ-ated Facilities	Certificate Application (BTX, BTA, or BSB) Required	Letter of Notification Application (BLN) Required	Construction Notice Appli-cation (BNR) Required
(4) Replacing electric power transmission line struc-ture(s) with a different type of structure(s) or adding structure(s) within an existing elec-tric power transmission line and:			
(a) Two miles or less of new right-of-way required.		X	
(b) More than two miles of new right-of-way required.	X		
(5) Rebuilding existing elec-tric power transmission line(s) for operation at a higher volt-age, for a distance of:			
(a) Two miles or less.		X	
(b) More than two miles.	X		
(6) Upgrading existing line(s) less than one hun-dred twenty-five kV to a voltage of one hundred twenty-five kV or greater, for a distance of:			
(a) Two miles or less.		X	
(b) More than two miles.	X		
(7) Constructing a new electric power trans-mission sub-station (except pole-mounted switching stations).	X		
(8) Constructing additions to existing elec-tric power transmission substations where:			
(a) There is a twenty per-cent or less expansion of the fenced area.			X
(b) There is a greater than twenty per-cent expan-sion of the fenced area.		X	
(9) Replace-ment or relocation of an electric power transmission line and associated facilities where the project is required by publicly funded entities and is located on or adjacent to right-of-way or land owned by the public entity requiring the pro-ject.			X

Application requirement matrix for natural gas pipelines

Description of the Pro-posed Gas Transmission Line and Associated Facilities (Designed for, or Capa-ble of, Transporting Gas or Natu-ral Gas at Pressures in Excess of One Hundred Twenty-Five Pounds per Square Inch)	Certificate Application (BTX or BTA) Required	Letter of Notification Application (BLN) Required	Construction Notice Ap-plication (BNR) Required
	4906-15-01 through 4906-15-07	4906-11-01	4906-11-02
(1) Rerouting or extension or new gas transmission line and associated facilities:			
(a) Not greater than one mile in length.			X
(b) Greater than one mile in length but not greater than five miles in length, and 9 through 13 inches in outside diameter.		X	
(c) Greater than five miles in length, and 9 through 13 inches in outside di-iameter.	X		
(d) Greater than one mile in length and greater than 13 inches in outside diameter.	X		
(2) Adding a compressor station to an existing gas transmission line.		X	
(3) Replacing an existing gas transmission line with a like facil-ity where such replacement re-quires an increase in the width of existing right-of-way, and where the expanded right-of-way is:			
(a) Less than one mile in length.			X
(b) Greater than or equal to one mile in length but not greater than five miles in length.		X	
(c) Greater than five miles in length.	X		
(4) Gas transmission lines greater than one mile which meet all the following criteria:		X	
(a) The facility proposed for construction must be located wholly within an existing or planned gas or natural gas distribution area.			
(b) The company must wholly own or solely operate the facility after completion of construction.			

Application requirement matrix for natural gas pipelines

	Description of the Pro-posed Gas Transmission Line and Associated Facilities (Designed for, or Capa-ble of, Transporting Gas or Natu-ral Gas at Pressures in Excess of One Hundred Twenty-Five Pounds per Square Inch)	Certificate Application (BTX or BTA) Required	Letter of Notification Application (BLN) Required	Construction Notice Ap-plication (BNR) Required
	(c) The primary purpose of the facility proposed for construction will be direct distribution of gas to consumers. The term "direct distribution of gas to con-sumers" means that at least sixty percent of the total volume of gas passing through the line on an annual basis must be gas which:			
	(i) Is titled to the distribution com-pany and/or an end user.			
	(ii) Is priced for retail sale, or the trans-portation of which is subject to the terms of an end user contract, mu-nicipal ordinance rate, or tariff, under the laws of the state of Ohio.			
	(iii) Will move directly from taps on the line to burner-tip facilities owned and operated by consumers or end users.			
	(5) Re-placement or relocation of gas transmis-sion line facilities where the project is required by publicly funded entities and is located on or adjacent to new right-of-way owned by the public entity re-quiring the project.			X



USAID
FROM THE AMERICAN PEOPLE

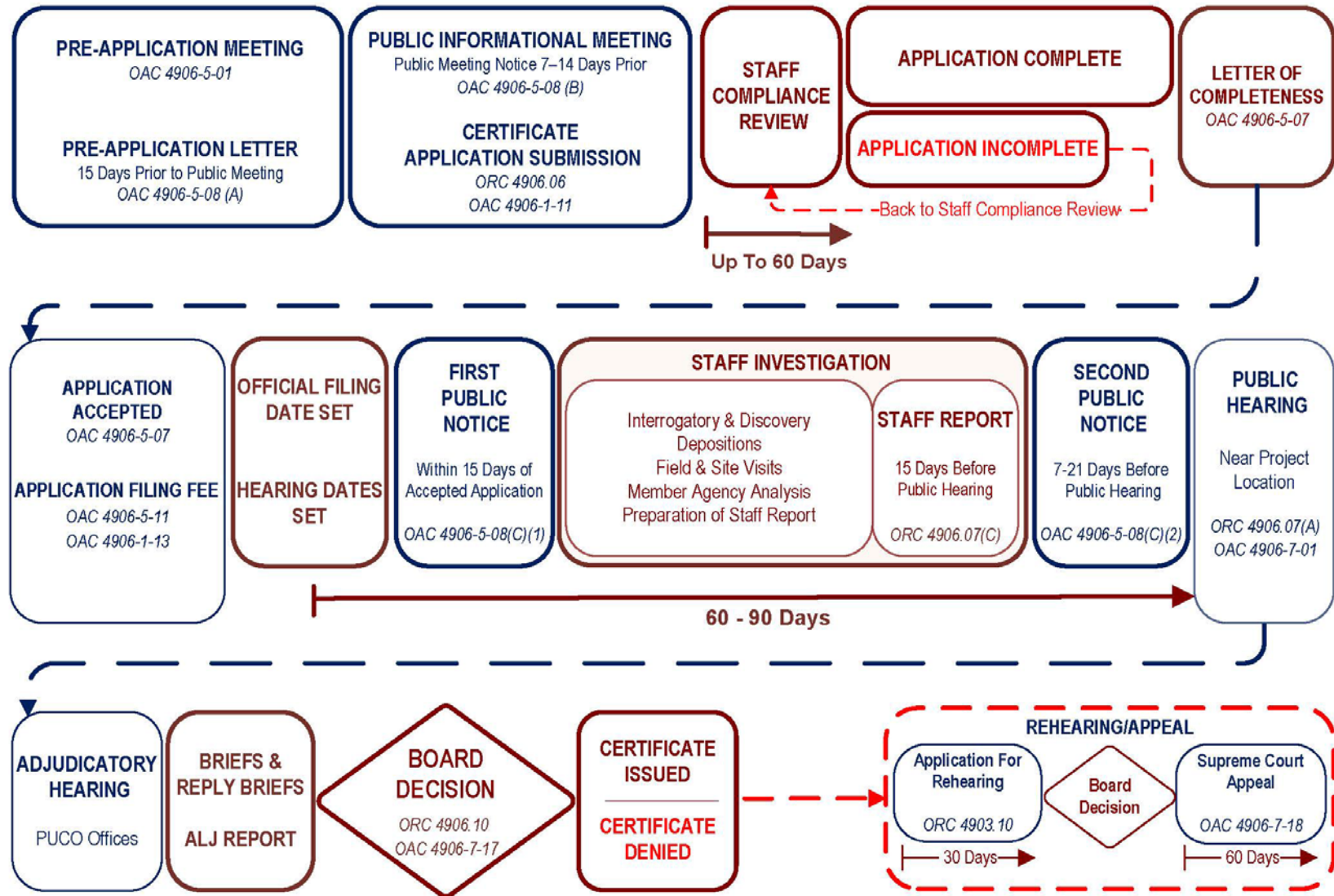


National
Association of
Regulatory
Utility
Commissioners

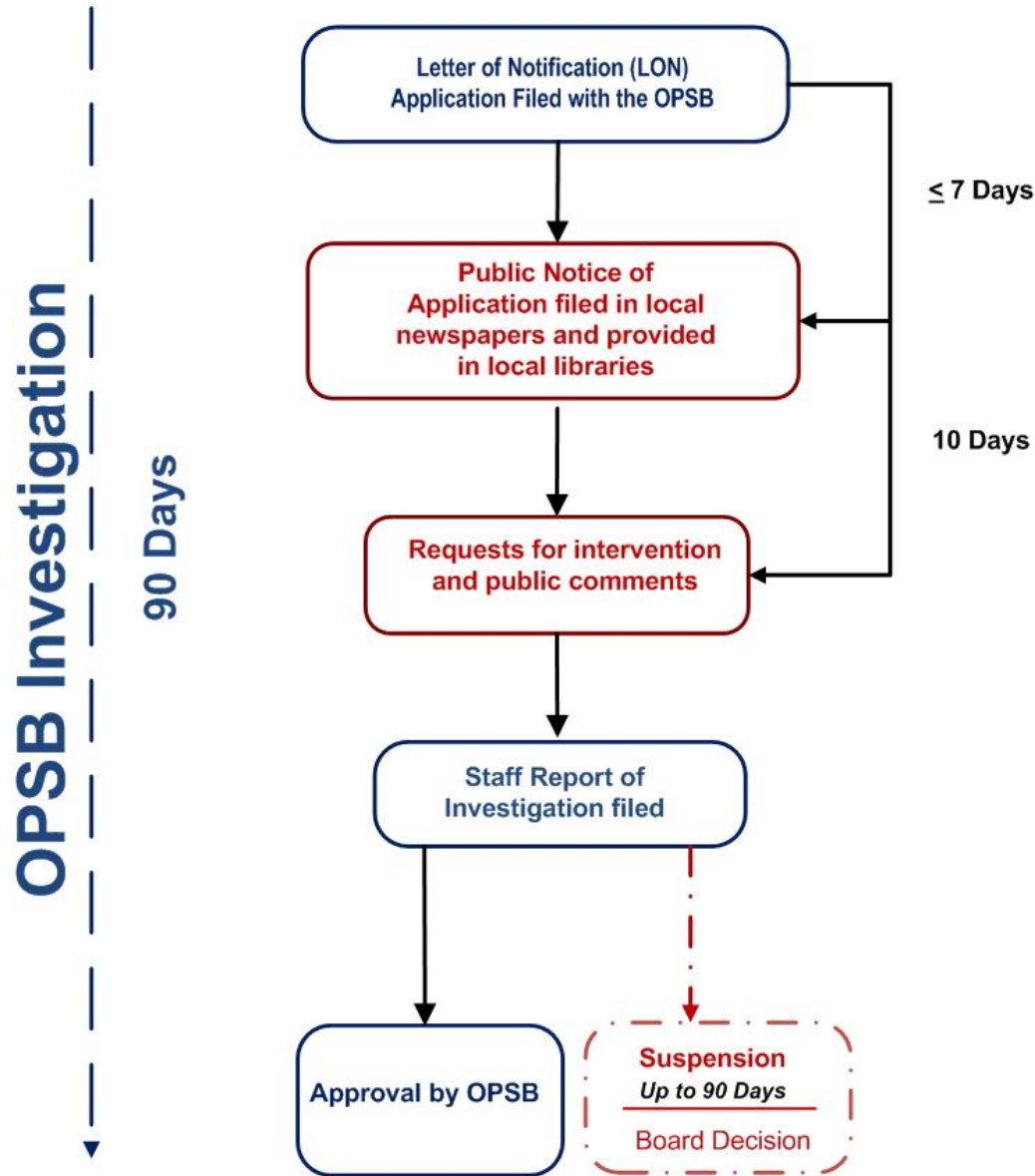
Board Process

- Application Submittal
- Application Review and Investigation
- Public Participation
- Board Decision

OHIO POWER SITING PROCESS FLOWCHART



Ohio Power Siting Board Interim Letter of Notification Application Process





USAID
FROM THE AMERICAN PEOPLE



National
Association of
Regulatory
Utility
Commissioners

Certificate Criteria

- The probable environmental impact
- Whether the facility represents the minimum adverse environmental impact, considering available technology and the nature and economics of alternatives
- The need for any transmission facility*
- The facility's consistency with regional plans for the expansion of the electric power grid of the electric systems serving Ohio and interconnected systems and that the facility will serve the interest of electric system economy and reliability
- That the facility will comply with all air and water pollution and solid waste disposal laws and regulations
- That the facility will serve the public interest, convenience, and necessity
- The facility's impact on the continued viability of any land in an existing agricultural district
- The facility incorporates maximum feasible water conservation practices

*Need is not needed for applicable for generation facilities



USAID
FROM THE AMERICAN PEOPLE



National
Association of
Regulatory
Utility
Commissioners

Staff Qualifications

- Mechanical Engineering
- Electrical Engineering
- Environmental Science
- Masters Environmental Economics
- Education
- Economics
- Sociology
- Geology
- PhD Industrial and System Engineering
- Chemical Engineering
- Chemistry
- Mass Media and Organizational Communications
- Natural Resources
- Electronic Engineering Technology
- International Business
- Physics
- Government
- Masters City and Regional Planning
- Environmental Biology
- Juris Doctor
- Geographic Information Systems (GIS)
- History
- Petroleum Engineering
- Finance
- Botany
- Business Administration and Marketing



USAID
FROM THE AMERICAN PEOPLE



National
Association of
Regulatory
Utility
Commissioners

Public Participation

Informal

- Public information meeting & public hearing
- Written submissions to the Board
- Phone inquiries

Formal

- Intervention by public officials (notice required)
- Intervention by impacted persons (request for intervention)



USAID
FROM THE AMERICAN PEOPLE



National
Association of
Regulatory
Utility
Commissioners

Public Participation

- OPSB certificate provides assurance to local governments through conditions
- Requirements for decommissioning bonds and road use agreements
- PILOT Program determined on local level (wind projects)



USAID
FROM THE AMERICAN PEOPLE



National
Association of
Regulatory
Utility
Commissioners

Lessons Learned

- Meet with siting staff early and often
 - Pre-Application meetings
 - Preliminary site visits
- It's all about public relations





USAID
FROM THE AMERICAN PEOPLE



National
Association of
Regulatory
Utility
Commissioners

Violations of Conditions

After notice and opportunity for a hearing and upon finding by the Board that an entity has violated their certificate, the board may assess a forfeiture:

- Not more than \$5,000 for each day of the violation
- The aggregate of forfeitures for a related series of violations shall not exceed one million dollars.

Considerations for determining the amount of forfeiture:

- The gravity of the violation
- The entity's history of prior violations
- The entity's good faith efforts to comply and undertake corrective action
- The entity's ability to pay the forfeiture
- The cost of the project
- The effect of the forfeiture on the entity's ability to continue as an applicant
- Such other matters as justice requires



USAID
FROM THE AMERICAN PEOPLE



National
Association of
Regulatory
Utility
Commissioners

Electric Generation

(Full Applications: 1998 thru 2013)

Generation Facility Type	Cases	Capacity (MW)	Estimated Costs	In-Service	Pending Board/ Construction Start	Under Construction
Coal	3	2,169	\$3,974,400,000	0	0	3
Coal-to-Liquids	1	560	\$0	0	0	0
Cogeneration-Waste Heat	5	635	\$565,113,197	1	1	0
Combined-Cycle	13	11,618	\$4,316,350,000	5	2	0
Compressed Air	1	2,700	\$1,650,000,000	0	0	0
Simple-Cycle	21	7,838	\$2,610,194,735	10	0	3
Wind	19	2,608	\$4,753,980,000	2	6	0
Facility Totals	63	28,128	\$17,870,037,932	18	6	6

Wind Power



OPSB Cases


Wind Project Areas

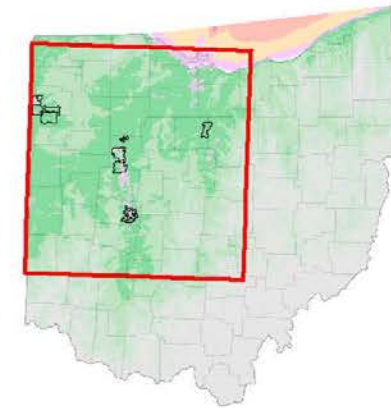
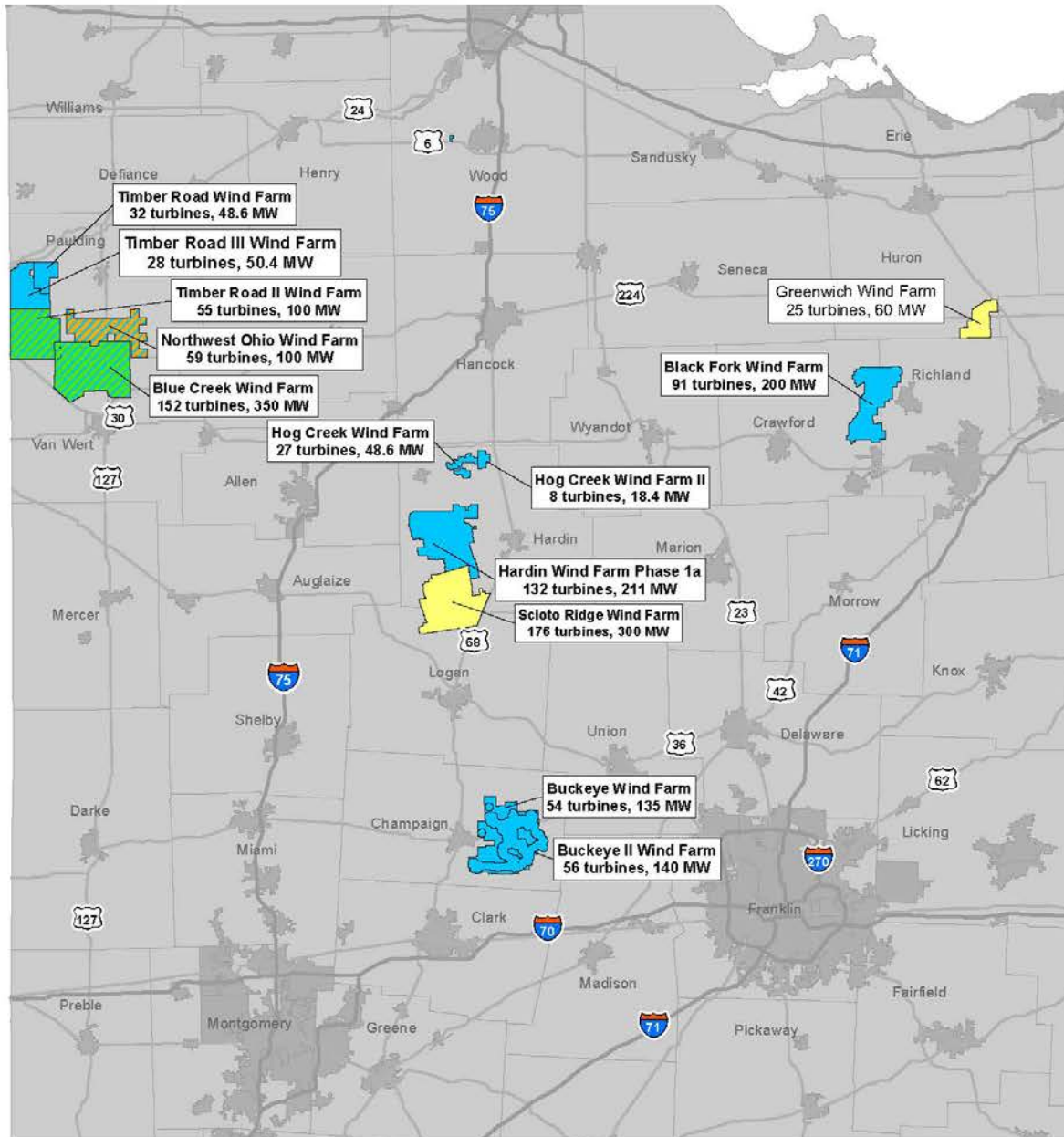
Application Status

-  Pending
-  Approved

Construction Status

-  Under construction
-  Operational

-  Populated Places



Wind Speed at 70 meters

Ohio Power Siting Board Wind Summary (DRAFT)

OPERATIONAL WIND FACILITIES			POTENTIAL WIND FACILITIES		
Operational Megawatts:	450		Potential Megawatts:	1,546	
Operational Turbines:	215		Potential Turbines:	831	

Facility Operational						
Case Number	Amendments	Project	County	Certified	Number of Turbines	Certified MW's
09-1066-EL-BGN		Blue Creek Wind Farm	Paulding, Van Wert	23-Aug-10	152	350
	11-1995-EL-BGA	Blue Creek Wind Farm	Paulding, Van Wert	25-Jul-11	8	-
10-0369-EL-BGN		Timber Road II	Paulding	18-Nov-10	55	100
TOTALS:					215	450

Received Certificate of Environmental Compatibility and Public Need						
Case Number	Amendments	Project	County	Certified	Number of Turbines	Certified MW's
08-0666-EL-BGN		Champaign	Champaign	22-Mar-10	54	135
09-0277-EL-BGN		Hog Creek I	Hardin	22-Mar-10	27	48.6
	11-0757-EL-BGA	Hog Creek I	Hardin	25-Jul-11	-	-
09-0479-EL-BGN		Hardin, Phase 1a	Hardin	22-Mar-10	132	211
	11-3446-EL-BGA	Hardin, Phase 1a	Hardin	29-Aug-11	-	-
09-0980-EL-BGN		Timber Road I	Paulding	23-Aug-10	32	48.6
10-0369-EL-BGN		Timber Road III	Paulding	28-Feb-11	28	50.4
10-0654-EL-BGN		Hog Creek II	Hardin	29-Aug-11	8	18.4
10-2865-EL-BGN		Black Fork	Crawford, Richland	23-Jan-12	91	200
12-0160-EL-BGN		Buckeye II	Champaign	28-May-13	56	140
13-0197-EL-BGN		Northwest Ohio Wind	Paulding	16-Dec-13	59	100
TOTALS:					487	952

Pending Certificate of Environmental Compatibility and Public Need				
Case No.	Project	County	Number of Turbines	Pending MW's
11-2400-EL-BGN ¹	Ashtabula	Ashtabula	28	50
11-4886-EL-BGN ¹	HoneyCreek	Crawford, Seneca	115	184
13-0360-EL-BGA	Buckeye I	Champaign	See 08-0666-EL-BGN	
13-0990-EL-BGN ¹	Greenwich Wind Farm	Huron	25	60
13-1177-EL-BGN	Scioto Ridge Wind Farm	Hardin, Logan	176	200



USAID
FROM THE AMERICAN PEOPLE



National
Association of
Regulatory
Utility
Commissioners

Electric Transmission Lines

(Full Applications: 1998 thru 2013)

Voltage Level (kV)	Cases Filed	Distance (miles)	Estimated Costs	Pending Board/ Construction Start	Under Construction	In-Service
138	23	210.32	\$ 167,690,829	6	2	13
345	7	50.24	\$ 29,431,000	3	0	3
Grand Total	30	260.56	\$ 197,121,829	9	14	16



USAID
FROM THE AMERICAN PEOPLE



National
Association of
Regulatory
Utility
Commissioners

Electric Transmission Substations

(Full Applications: 1998 thru 2013)

Cases Filed	Costs	Pending Board	Under Construction	In-Service	Withdrawn
18	\$ 361,397,895	5	6	6	1



USAID
FROM THE AMERICAN PEOPLE



National
Association of
Regulatory
Utility
Commissioners

Gas Transmission

(Full Applications: 1998 thru 2013)

Cases Filed	Estimated Costs	Pending Board	Under Construction	In-Service
19	\$ 695,040,337	1	0	10



USAID
FROM THE AMERICAN PEOPLE



National
Association of
Regulatory
Utility
Commissioners

Construction Notices

(Accelerated Applications: 1998 thru 2013)

Electric			
Cases Filed	Line Miles	Estimated Costs	In-Service
136	230	\$ 309,734,198	104

Natural Gas			
Cases Filed	Line Miles	Estimated Costs	In-Service
105	51	\$ 103,899,324	84



USAID
FROM THE AMERICAN PEOPLE



National
Association of
Regulatory
Utility
Commissioners

Letter of Notifications

(Accelerated Applications: 1998 thru 2013)

Electric			
Cases Filed	Line Miles	Estimated Costs	In-Service
252	236	\$ 568,027,290	200

Natural Gas			
Cases Filed	Line Miles	Estimated Costs	In-Service
31	189	\$ 162,395,450	18



USAID
FROM THE AMERICAN PEOPLE



National
Association of
Regulatory
Utility
Commissioners

For more information about the OPSB, the siting process and current applications please visit:

www.OPSB.ohio.gov

The Ohio Power Siting Board
180 East Broad Street
Columbus, Ohio 43215
(886) 270-OPSB (6772)



Find OPSB on Facebook: www.facebook.com/OhioPSB

