



**USAID**  
FROM THE AMERICAN PEOPLE



National  
Association of  
Regulatory  
Utility  
Commissioners

# U.S. Shale Gas Snapshot

***Thomas Pearce***

*Past Chair, NARUC Staff Subcommittee on Gas  
Chair, NARUC Staff Subcommittee on Critical Infrastructure*

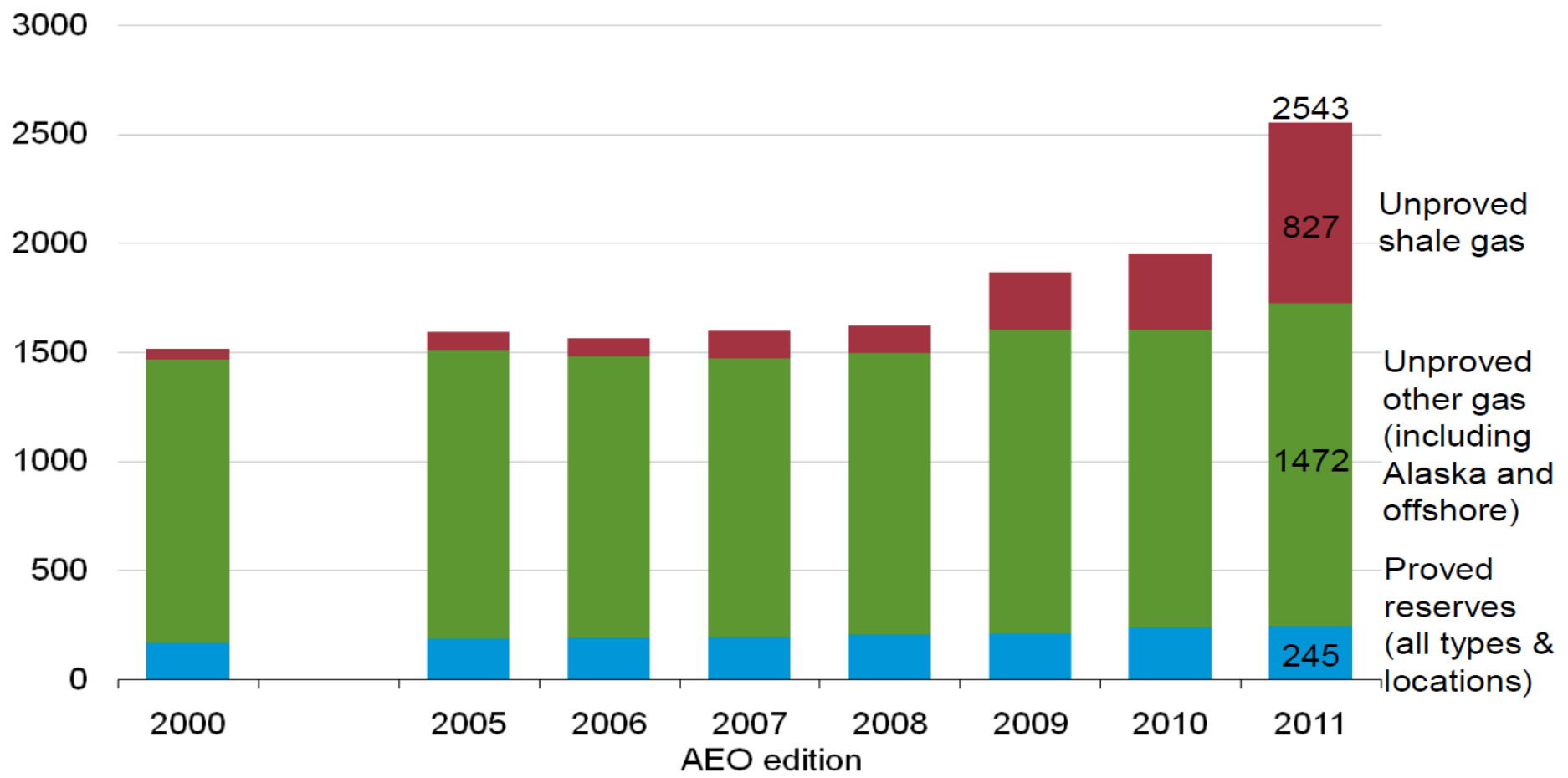
WAGPA Natural Gas Workshop  
Cotonou, February 14-16, 2012

# DISCLAIMER

Nothing contained within this presentation shall be deemed to represent any positions or views of USAID, the National Association of Regulatory Utility Commissioners (NARUC), its officers, its staff, its Committees, its Subcommittees, any or all of its individual member commissions, the state of Ohio, its Governor, the Public Utilities Commission of Ohio, its Commissioners, nor its Staff.

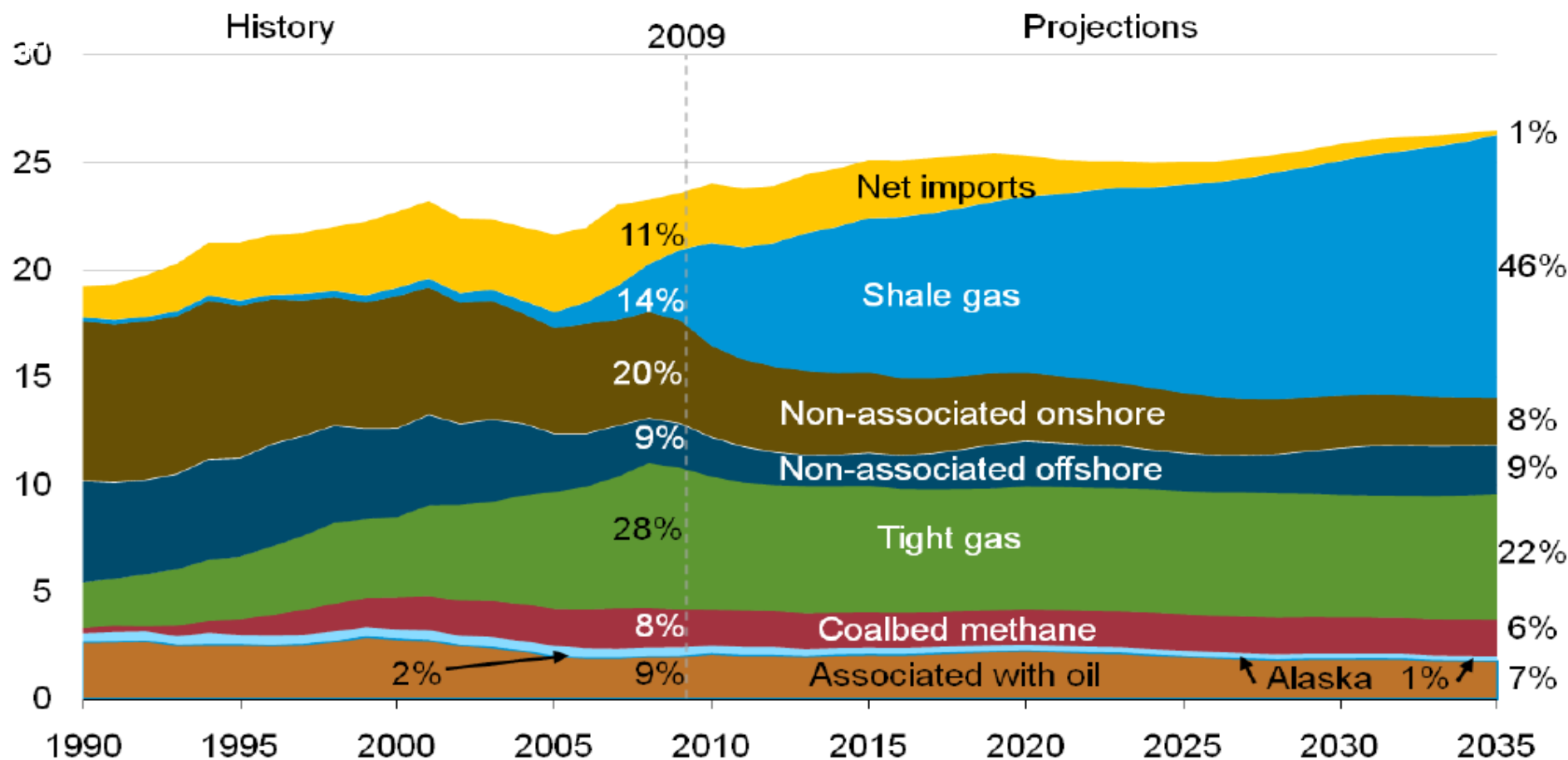
# Recent Annual Energy Outlook natural gas resources

U.S. dry natural gas resources  
trillion cubic feet

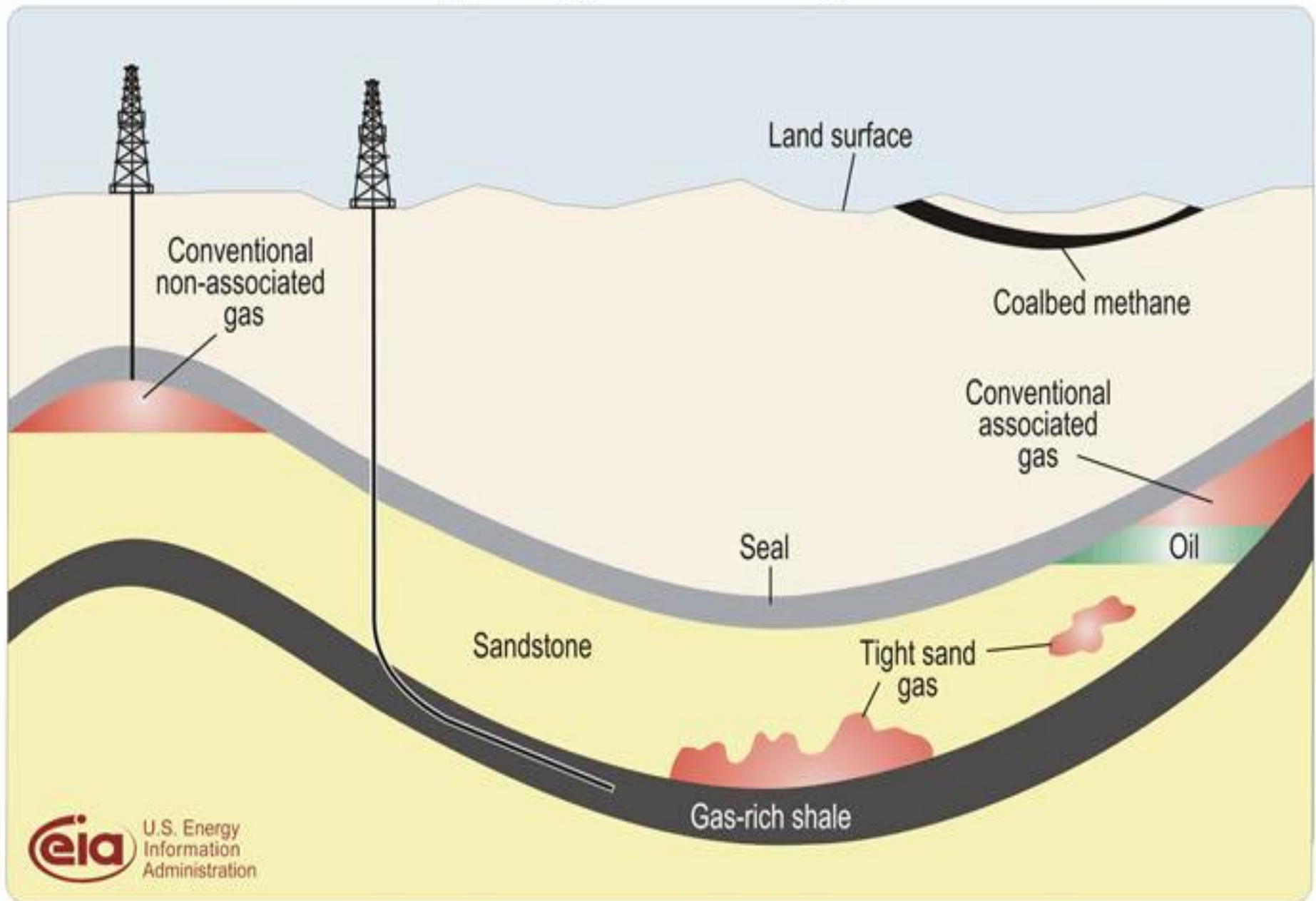


Source: EIA, Annual Energy Outlook 2011 and earlier editions

# U.S. dry gas trillion cubic feet per year

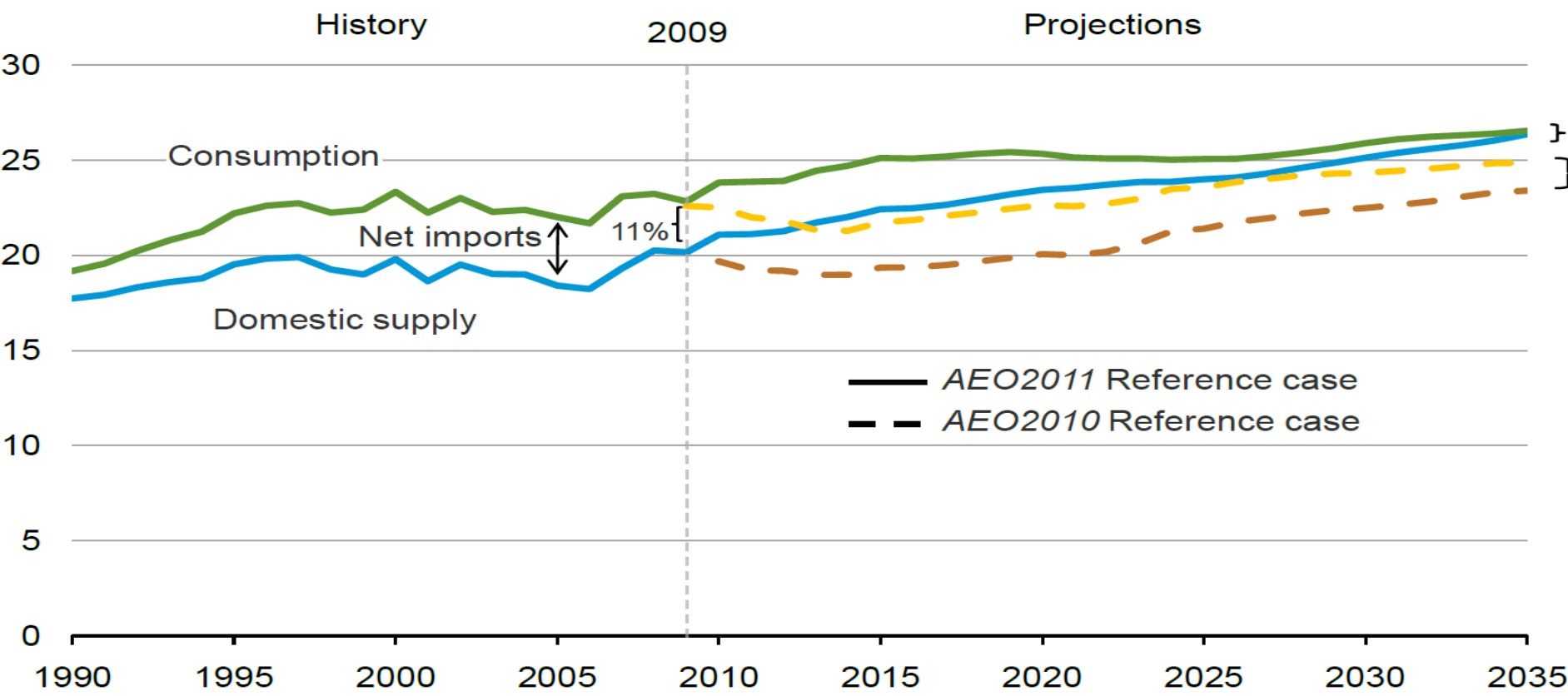


# Schematic geology of natural gas resources



# 30% domestic gas production growth outpaces 16% consumption growth, leading to declining imports

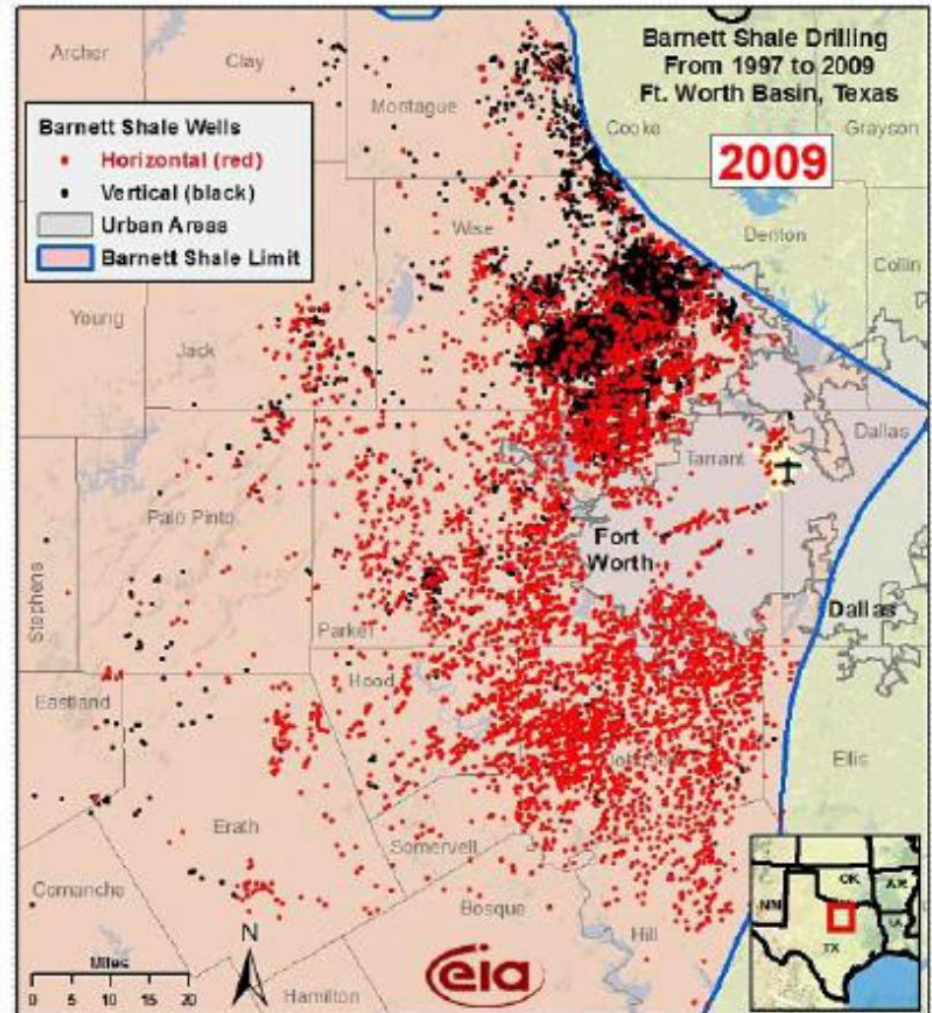
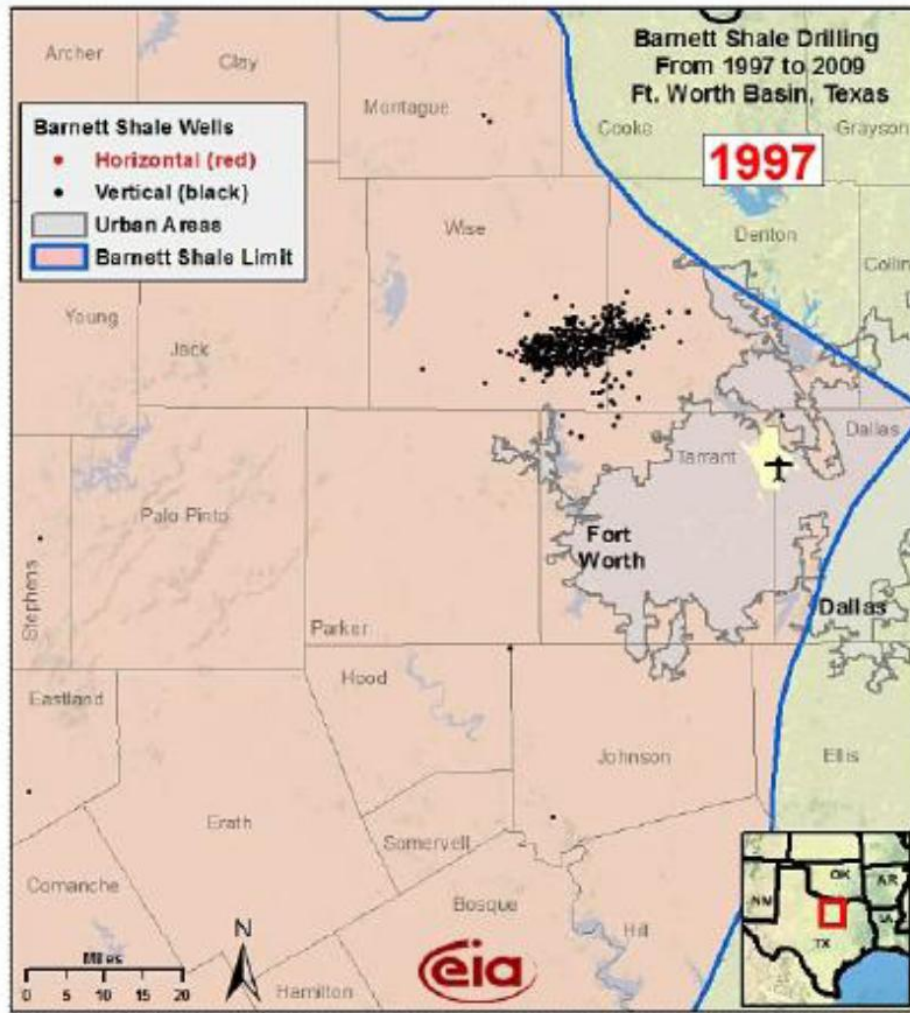
U.S. dry gas  
trillion cubic feet per year



Source: EIA, Annual Energy Outlook 2011



# Since 1997, more than 12,000 gas wells completed in the Barnett shale



**Questions?**

**Merci**